



FULL YEAR 2014 TOTAL STEEL IMPORTS UP 38% FROM 2013
Finished Steel Import Market Share 30% in December

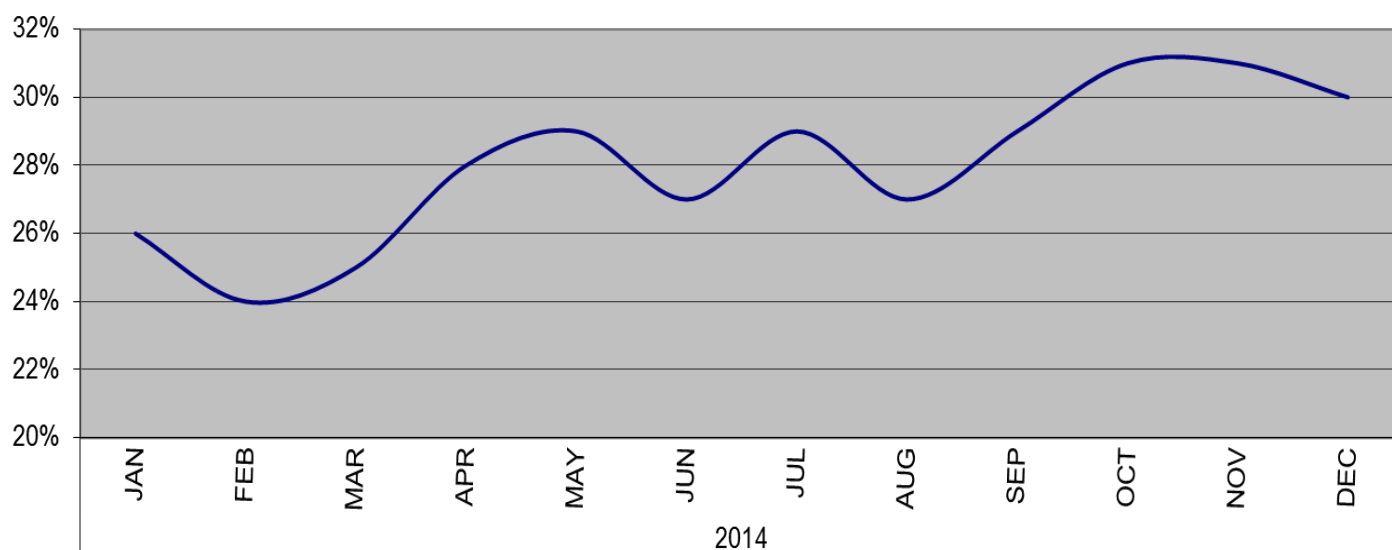
Washington, D.C. – Based on preliminary Census Bureau data, the American Iron and Steel Institute (AISI) reported today that the U.S. imported a total of 3,620,000 net tons (NT) of steel in December, including 2,941,000 net tons (NT) of finished steel (down 2.0% and up 0.1%, respectively, vs. November final data). Full year 2014 total and finished steel imports are 44,320,000 and 33,733,000 net tons (NT), respectively, up 38% and 36% respectively, vs. 2013. Finished steel import market share was an estimated 30% in December and is estimated at 28% for 2014.

Key finished steel products with a significant import increase in December compared to November are wire rods (up 36%), line pipe (up 18%), standard pipe (up 13%), hot rolled bars (up 11%) and plates in coils (up 10%). Major products with significant import increases in 2014 vs. the prior year include plates in coils (up 90%), cold rolled sheets (up 88%), wire rods (up 85%), cut lengths plates (up 83%), heavy structural shapes (up 60%), sheets and strip hot dipped galvanized (up 60%), hot rolled sheets (up 46%), sheets and strip all other metallic coatings (up 42%), tin plate (up 30%), mechanical tubing (up 28%), oil country goods (up 22%) and reinforcing bars (up 19%).

			% var	(12 mo.)	(12 mo.)	% var			% var
	Dec.	Nov.	Dec. vs.	YTD	YTD	'14 vs.	2014	2013	2014
Steel Mill Product	(prelim.)	final	Nov.	2014	2013	'13	Ann.	12 mo.	vs 2013
Ingots and Billets and Slabs	675,960	753,313	-10.3%	10,536,570	7,284,552	44.6%	10,536,570	7,284,552	44.6%
Sheets Hot Rolled	369,335	397,585	-7.1%	4,340,115	2,981,741	45.6%	4,340,115	2,981,741	45.6%
Oil Country Goods	332,611	352,573	-5.7%	4,014,588	3,289,767	22.0%	4,014,588	3,289,767	22.0%
Sheets & Strip Galv Hot Dipped	287,707	274,746	4.7%	3,313,269	2,077,167	59.5%	3,313,269	2,077,167	59.5%
Sheets Cold Rolled	285,573	292,395	-2.3%	2,952,939	1,571,458	87.9%	2,952,939	1,571,458	87.9%
Line Pipe	260,333	221,460	17.6%	2,355,400	2,366,697	-0.5%	2,355,400	2,366,697	-0.5%
Plates in Coils	223,517	202,476	10.4%	2,229,722	1,175,856	89.6%	2,229,722	1,175,856	89.6%
Plates Cut Lengths	205,991	191,481	7.6%	1,863,232	1,016,628	83.3%	1,863,232	1,016,628	83.3%
Bars - Hot Rolled	131,883	119,273	10.6%	1,643,998	1,780,742	-7.7%	1,643,998	1,780,742	-7.7%
Wire Rods	121,283	89,478	35.5%	1,624,760	878,577	84.9%	1,624,760	878,577	84.9%
Bars - Reinforcing	92,363	156,745	-41.1%	1,436,737	1,208,899	18.8%	1,436,737	1,208,899	18.8%
Sheets & Strip All Other Met.	49,996	89,995	-44.4%	1,020,396	719,945	41.7%	1,020,396	719,945	41.7%
Structural Shapes Heavy	70,447	78,566	-10.3%	913,488	571,602	59.8%	913,488	571,602	59.8%
Standard Pipe	82,591	72,914	13.3%	907,216	874,002	3.8%	907,216	874,002	3.8%
Wire Drawn	65,794	60,424	8.9%	809,398	713,411	13.5%	809,398	713,411	13.5%
Mechanical Tubing	58,655	57,238	2.5%	746,768	585,651	27.5%	746,768	585,651	27.5%
Tin Plate	60,293	65,512	-8.0%	698,162	537,390	29.9%	698,162	537,390	29.9%
All Other	245,585	217,980	12.7%	2,913,662	2,516,792	15.8%	2,913,662	2,516,792	15.8%
TOTAL	3,619,917	3,694,154	-2.0%	44,320,420	32,150,877	37.9%	44,320,420	32,150,877	37.9%
SUBTOTAL Finished Imports	2,941,153	2,937,098	0.1%	33,733,075	24,829,257	35.9%	33,733,075	24,829,257	35.9%

In December, the largest volumes of finished steel imports from offshore were from South Korea (418,000 NT, down 11% vs. November final), China (217,000 NT, down 16%), Japan (185,000 NT, up 20%), Russia (181,000 NT, up 415%) and Germany (164,000 NT, up 38%). In 2014, the largest offshore suppliers were South Korea (5,448,000 NT, up 47%), China (3,187,000 NT, up 68%), Turkey (2,196,000 NT, up 82%), Japan (2,106,000 NT, up 11%) and Russia (1,418,000 NT, up 489%). Below are charts on estimated steel import market share in recent months and on finished steel imports from offshore by country.

Estimated Finished Steel Import Market Share for the Past 12 Months



**U.S. IMPORTS OF FINISHED STEEL MILL PRODUCTS
BY COUNTRY OF ORIGIN
(thousands of net tons)**

COUNTRY	Dec. 2014 (Prelim.)	Nov. 2014 final	% incr. Dec. vs. Nov.	(12 mo.) YTD 2014	(12 mo.) YTD 2013	% incr. '14 YTD vs. '13	2014 full year	2013 Annual	% incr. 2014 vs. '13
South Korea	418	467	-10.6%	5,448	3,718	46.5%	5,448	3,718	46.5%
China	217	259	-16.2%	3,187	1,898	67.9%	3,187	1,898	67.9%
Turkey	161	208	-22.7%	2,196	1,204	82.4%	2,196	1,204	82.4%
Japan	185	153	20.4%	2,106	1,898	11.0%	2,106	1,898	11.0%
Russia	181	35	415.0%	1,418	241	489.1%	1,418	241	489.1%
Germany	164	119	38.0%	1,278	1,112	15.0%	1,278	1,112	15.0%
Taiwan	77	120	-36.4%	1,188	762	56.0%	1,188	762	56.0%
All Other	1,539	1,575	-2.2%	16,911	13,997	20.8%	16,911	13,997	20.8%
Total	2,941	2,937	0.1%	33,733	24,829	35.9%	33,733	24,829	35.9%

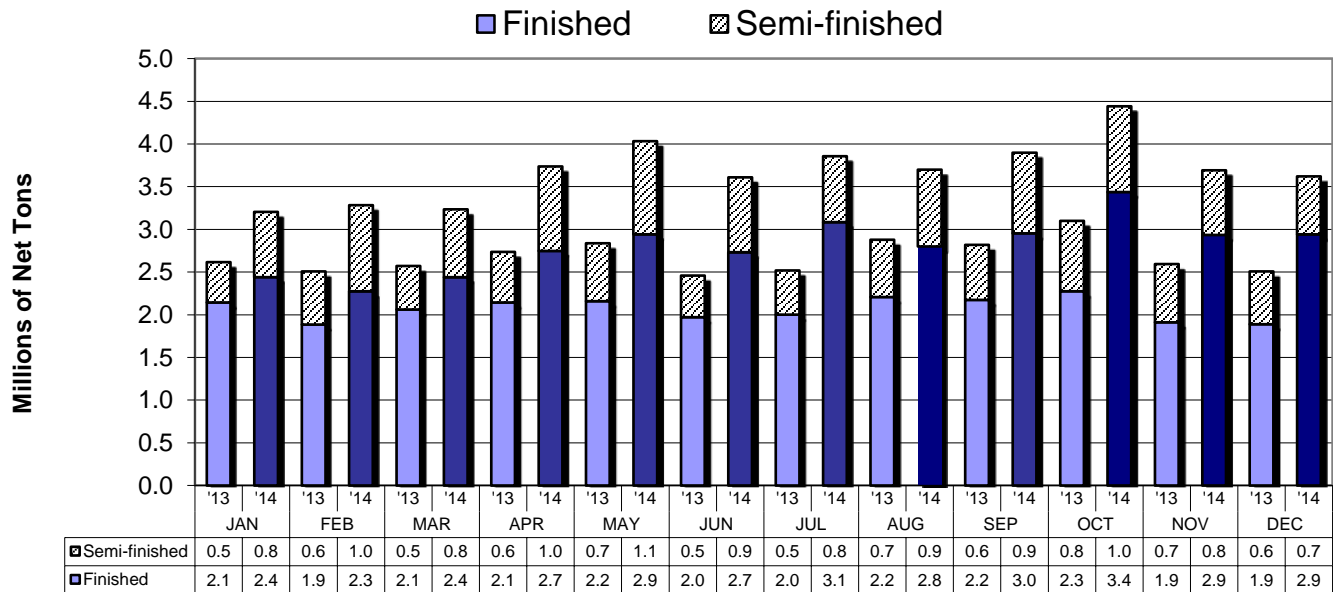
U.S. IMPORTS OF FINISHED STEEL MILL PRODUCTS 3 MONTHS ROLLING AVERAGE (thousands of net tons)			
Product	Preliminary 3 Mos. Rolling Avg. Dec.-Oct.	Actual 3 Mos. Prior Sep.-Jul.	Current 3 Months vs 3 Months Prior % Change
Sheets Hot Rolled	423	390	8.5%
Oil Country Goods	335	349	-3.9%
Sheets & Strip Galv. Hot Dipped	302	296	2.2%
Sheets Cold Rolled	301	265	13.9%
Line Pipe	238	210	12.9%
Plates in Coils	227	207	9.9%
Plates Cut Lengths	199	167	19.2%
Bars - Hot Rolled	136	142	-4.5%
Bars - Reinforcing	134	95	41.2%
Wire Rods	121	113	7.7%
All Other	688	712	-3.4%
Total	3,106	2,946	5.4%

U.S. IMPORTS OF FINISHED STEEL MILL PRODUCTS 3 MONTHS ROLLING AVERAGE (thousands of net tons)			
Country	Preliminary 3 Mos. Rolling Avg. Dec.-Oct.	Actual 3 Mos. Prior Sep.-Jul.	Current 3 Months vs 3 Months Prior % Change
South Korea	478	468	2.2%
China	282	275	2.5%
Turkey	239	173	38.4%
Japan	192	180	6.5%
Germany	125	106	17.6%
Russia	112	162	-30.4%
Brazil	112	62	78.8%
Taiwan	105	113	-6.6%
Netherlands	98	77	27.8%
India	97	72	34.6%
All Other	1,266	1,259	0.5%
Total	3,106	2,946	5.4%

Source: U.S. Dept. of Commerce, Bureau of Census.

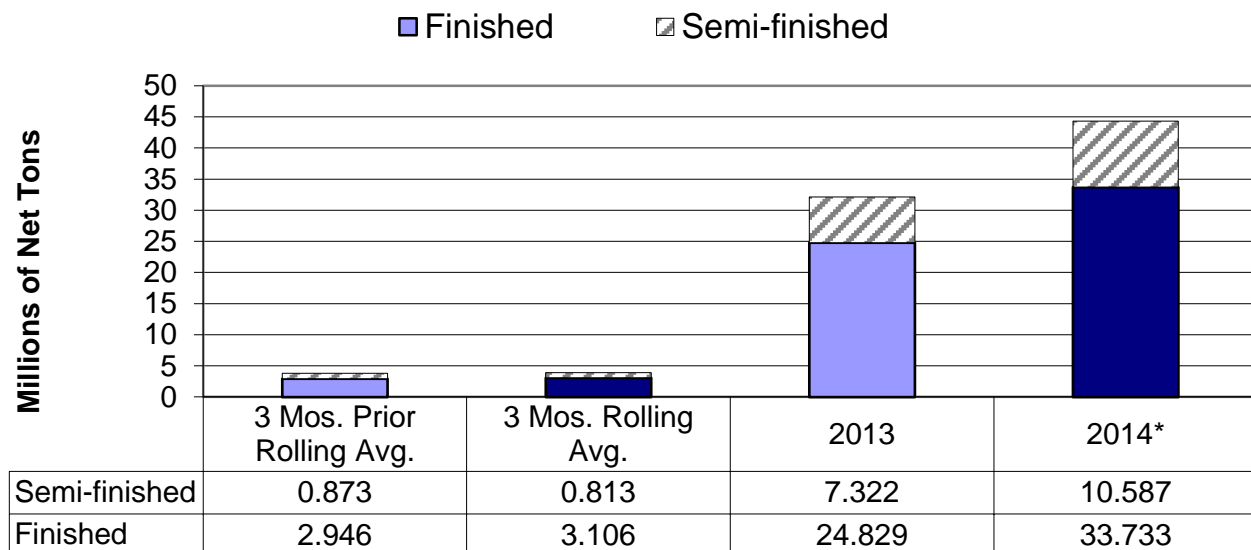
-MORE-

Monthly Imports 2014 vs. 2013



% change finished imports December 2014 vs. December 2013 = +55.7%

3 Month Rolling Averages and 2014 vs. 2013



% change finished imports 3 Mos. Rolling Avg. vs. 3 Mos. Prior = +5.4%

% change semi-finished imports 2014 vs 2013 = +44.6%

% change finished imports 2014 vs 2013 = +35.9%

* annualized

AISI serves as the voice of the North American steel industry in the public policy arena and advances the case for steel in the marketplace as the preferred material of choice. AISI also plays a lead role in the development and application of new steels and steelmaking technology. AISI is comprised of 19 member companies, including integrated and electric furnace steelmakers, and approximately 125 associate members who are suppliers to or customers of the steel industry. For more news about steel and its applications, view AISI's website at www.steel.org.

-#####-