



**FOR IMMEDIATE RELEASE**  
**March 24, 2023**

**CONTACT Lisa Harrison**  
**202.452.7115/lharrison@steel.org**

**STEEL IMPORTS DOWN 13.5% IN FEBRUARY VS. JANUARY**  
***Finished Import Market Share YTD at 23%***

**Washington, D.C.** – Based on preliminary Census Bureau data, the American Iron and Steel Institute (AISI) reported today that the U.S. imported a total of 2,255,000 net tons (NT) of steel in February 2023, including 1,716,000 net tons (NT) of finished steel (down 13.5% and 14.3%, respectively, vs. January 2023). Total and finished steel imports are down 9.8% and 9.7%, respectively, year-to-date vs. 2022. Over the 12-month period March 2022 to February 2023, total and finished steel imports are down 6.8% and up 2.7%, respectively, vs. the prior 12-month period. Finished steel import market share was an estimated 22% in February and is estimated at 23% over the first two months of 2023.

A key steel product with a significant import increase in February compared to January was line pipe (up 35%). Products with a significant increase in imports over the 12-month period March 2022 to February 2023 compared to the previous 12-month period include line pipe (up 49%), oil country goods (up 43%), standard pipe (up 39%), heavy structural shapes (up 34%) and tin plate (up 11%).

Steel Mill Product	Feb. 2023 Prelim.	Jan. 2023 Final	% var Feb. vs. Jan.	YTD 2023 (2 mo.)	YTD 2022 (2 mo.)	% var '23 vs. '22	Mar. 2022 to Feb. 2023	Mar. 2021 to Feb. 2022	% var.
Ingots and Billets and Slabs	538,182	605,539	-11.1%	1,143,720	1,270,224	-10.0%	5,443,496	8,313,623	-34.5%
Oil Country Goods	257,599	320,250	-19.6%	577,849	351,094	64.6%	2,889,227	2,024,799	42.7%
Sheets & Strip Galv. Hot Dipped	169,960	205,664	-17.4%	375,624	570,791	-34.2%	2,607,741	3,165,973	-17.6%
Sheets Hot Rolled	117,503	151,483	-22.4%	268,987	459,124	-41.4%	2,286,142	3,160,908	-27.7%
Sheets Cold Rolled	100,316	133,189	-24.7%	233,505	395,336	-40.9%	2,009,961	2,002,843	0.4%
Plates in Coils	117,434	120,947	-2.9%	238,381	248,668	-4.1%	1,627,994	1,482,300	9.8%
Bars - Reinforcing	106,420	101,366	5.0%	207,786	231,842	-10.4%	1,438,750	1,369,084	5.1%
Wire Rods	79,883	79,294	0.7%	159,177	262,150	-39.3%	1,387,607	1,295,751	7.1%
Line Pipe	115,732	85,964	34.6%	201,696	125,638	60.5%	1,205,235	806,840	49.4%
Tin Plate	70,391	70,449	-0.1%	140,839	166,969	-15.6%	1,057,913	950,033	11.4%
Sheets & Strip All Other Met. Ctd.	76,893	85,116	-9.7%	162,008	203,368	-20.3%	1,040,664	1,254,351	-17.0%
Bars - Hot Rolled	66,537	82,851	-19.7%	149,388	145,251	2.8%	980,170	914,337	7.2%
Standard Pipe	61,600	78,935	-22.0%	140,535	116,646	20.5%	936,042	672,308	39.2%
Structural Shapes Heavy	71,919	72,453	-0.7%	144,372	117,609	22.8%	820,430	611,045	34.3%
Wire Drawn	52,889	55,378	-4.5%	108,267	130,394	-17.0%	738,650	819,171	-9.8%
Mechanical Tubing	48,542	67,820	-28.4%	116,363	104,751	11.1%	705,714	636,638	10.9%
Plates Cut Lengths	45,008	58,248	-22.7%	103,256	97,129	6.3%	612,649	609,335	0.5%
All Other	158,686	233,880	-32.2%	392,566	395,089	-0.6%	2,532,627	2,446,263	3.5%
<b>TOTAL</b>	<b>2,255,494</b>	<b>2,608,824</b>	<b>-13.5%</b>	<b>4,864,318</b>	<b>5,392,072</b>	<b>-9.8%</b>	<b>30,321,012</b>	<b>32,535,603</b>	<b>-6.8%</b>
<b>SUBTOTAL Finished Imports</b>	<b>1,715,750</b>	<b>2,002,051</b>	<b>-14.3%</b>	<b>3,717,801</b>	<b>4,118,863</b>	<b>-9.7%</b>	<b>24,862,993</b>	<b>24,204,240</b>	<b>2.7%</b>

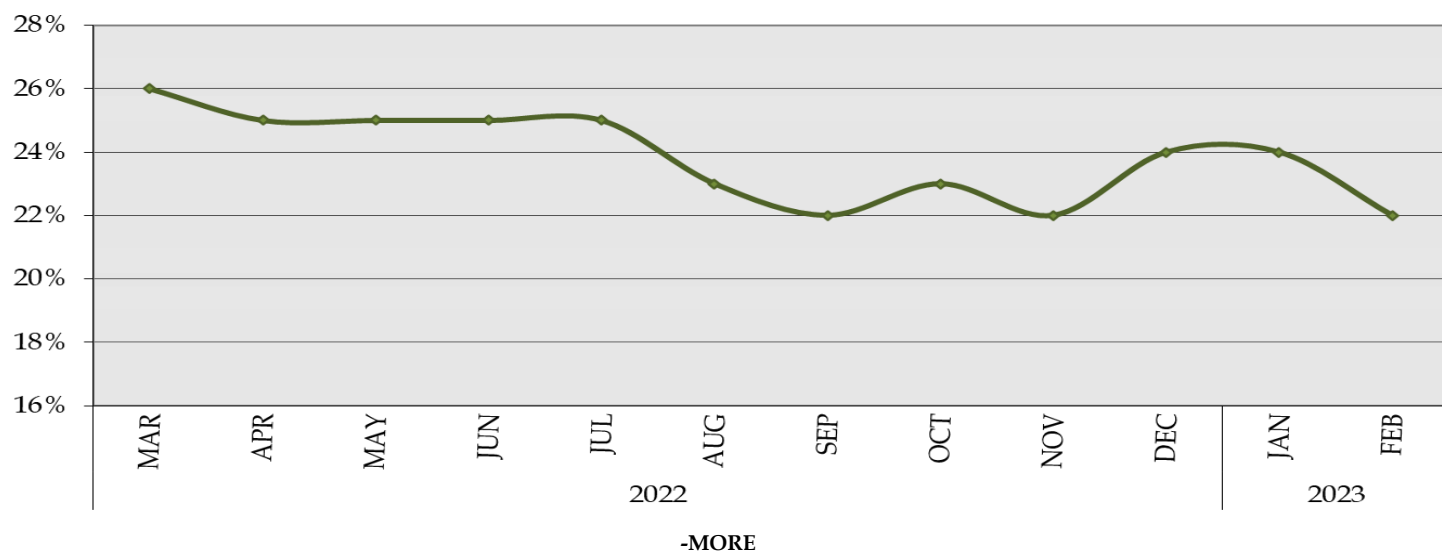
-MORE-

In February, the largest suppliers were Canada (538,000 NT, down 9% vs. January), Mexico (382,000 NT, down 16%), Brazil (353,000 NT, down 11%), South Korea (225,000 NT, up 63%) and Germany (79,000 NT, down 21%). Over the 12-month period March 2022 to February 2023, the largest suppliers were Canada (6,943,000 NT, no change compared to the previous 12-months), Mexico (5,123,000 NT, down 1%), South Korea (2,804,000 NT, up 2%), Brazil (2,676,000 NT, down 32%) and Japan (1,264,000 NT, up 11%). Below are charts on steel imports by country and estimated finished steel import market share in recent months.

**U.S. IMPORTS OF STEEL MILL PRODUCTS  
BY COUNTRY OF ORIGIN  
(thousands of net tons)**

COUNTRY	Feb. 2023 Prelim.	Jan. 2023 Final	% var Feb. vs. Jan.	YTD 2023 (2 mo.)	YTD 2022 (2 mo.)	% var 2023 vs. '22	Mar. 2022 to Feb. 2023	Mar. 2021 to Feb. 2022	% var.
Canada	538	593	-9.3%	1,131	1,047	8.0%	6,943	6,930	0.2%
Mexico	382	455	-16.1%	838	1,017	-17.7%	5,123	5,160	-0.7%
South Korea	225	139	62.5%	364	377	-3.3%	2,804	2,762	1.5%
Brazil	353	395	-10.7%	748	640	16.9%	2,676	3,928	-31.9%
Japan	54	136	-60.2%	190	187	1.6%	1,264	1,138	11.1%
Germany	79	100	-20.7%	179	157	14.5%	1,149	1,271	-9.6%
Taiwan	58	71	-18.7%	129	182	-29.3%	984	1,007	-2.3%
Turkey	27	29	-7.4%	56	155	-63.9%	901	1,012	-11.0%
Vietnam	41	43	-4.5%	83	215	-61.3%	805	1,120	-28.1%
China	53	70	-24.1%	123	117	5.7%	658	528	24.7%
India	41	20	107.2%	60	127	-52.5%	618	504	22.4%
Netherlands	50	31	62.9%	81	81	-0.2%	594	623	-4.6%
Romania	60	28	111.0%	88	52	68.8%	519	393	32.1%
Italy	24	61	-61.2%	85	59	43.5%	477	277	72.2%
Algeria	56	37	48.9%	93	136	-31.4%	466	489	-4.7%
All Other	216	401	-46.3%	617	844	-26.9%	4,340	5,394	-19.5%
Total	2,255	2,609	-13.5%	4,864	5,392	-9.8%	30,321	32,536	-6.8%
memo EU-27	316	408	-22.6%	724	615	17.7%	4,518	3,930	15.0%

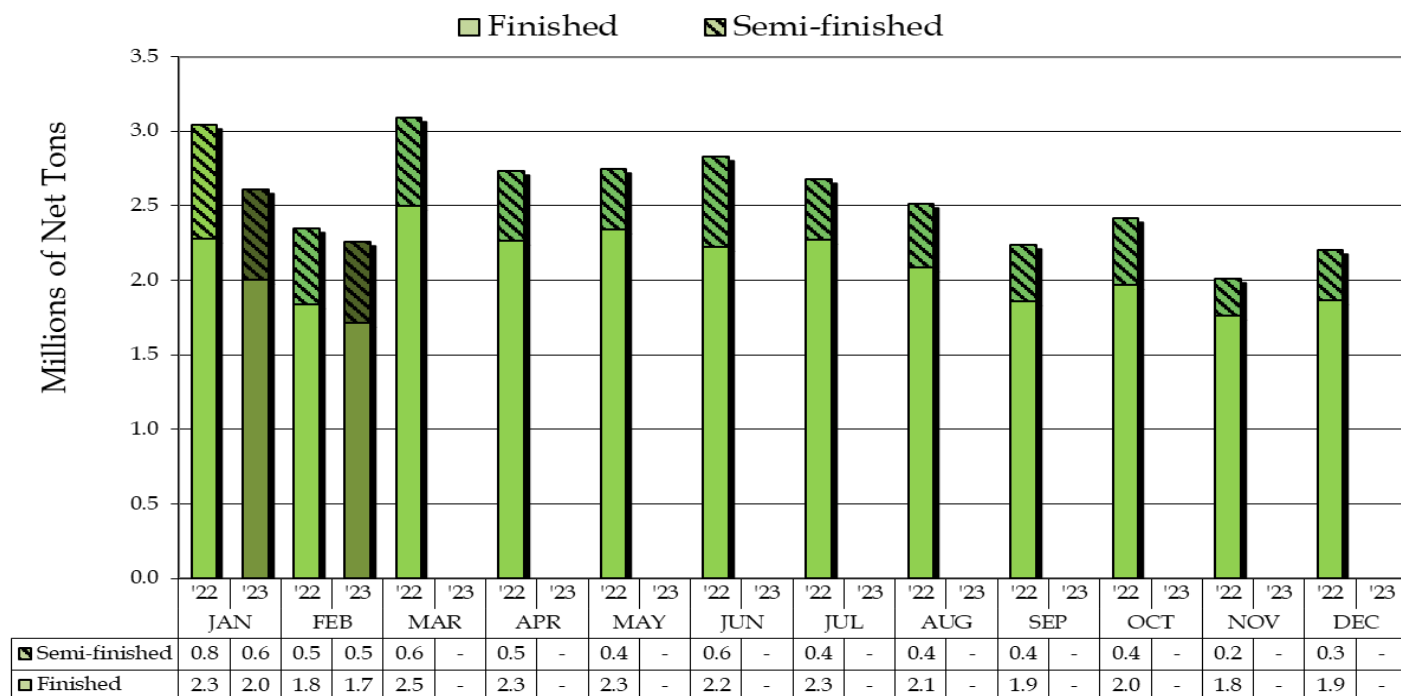
Estimated Finished Steel Import Market Share for the Past 12 Months



<b>U.S. IMPORTS OF FINISHED STEEL MILL PRODUCTS</b> <b>3 MONTHS ROLLING AVERAGE</b> <b>(thousands of net tons)</b>			
<b>Steel Mill Product</b>	<b>Preliminary 3 Mos. Rolling Avg. Feb. '23 - Dec. '22</b>	<b>Final 3 Mos. Rolling Avg. Nov. '22 - Sep. '22</b>	<b>Current 3 Months vs. 3 Months Prior % Change</b>
Oil Country Goods	302	218	38.6%
Sheets & Strip Galv. Hot Dipped	189	182	4.0%
Sheets Hot Rolled	138	166	-16.6%
Sheets Cold Rolled	126	156	-18.8%
Plates in Coils	125	117	7.0%
Line Pipe	113	111	1.4%
Bars - Reinforcing	97	92	5.0%
Wire Rods	76	70	8.6%
Bars - Hot Rolled	75	80	-6.1%
Sheets & Strip All Other Met. Ctd.	72	70	3.8%
Standard Pipe	69	80	-14.8%
Tin Plate	65	85	-22.8%
Structural Shapes Heavy	60	71	-14.9%
Mechanical Tubing	55	56	-0.1%
Wire Drawn	54	58	-7.3%
Plates Cut Lengths	45	57	-20.5%
All Other	198	197	0.5%
<b>TOTAL Finished Imports</b>	<b>1,860</b>	<b>1,864</b>	<b>-0.2%</b>

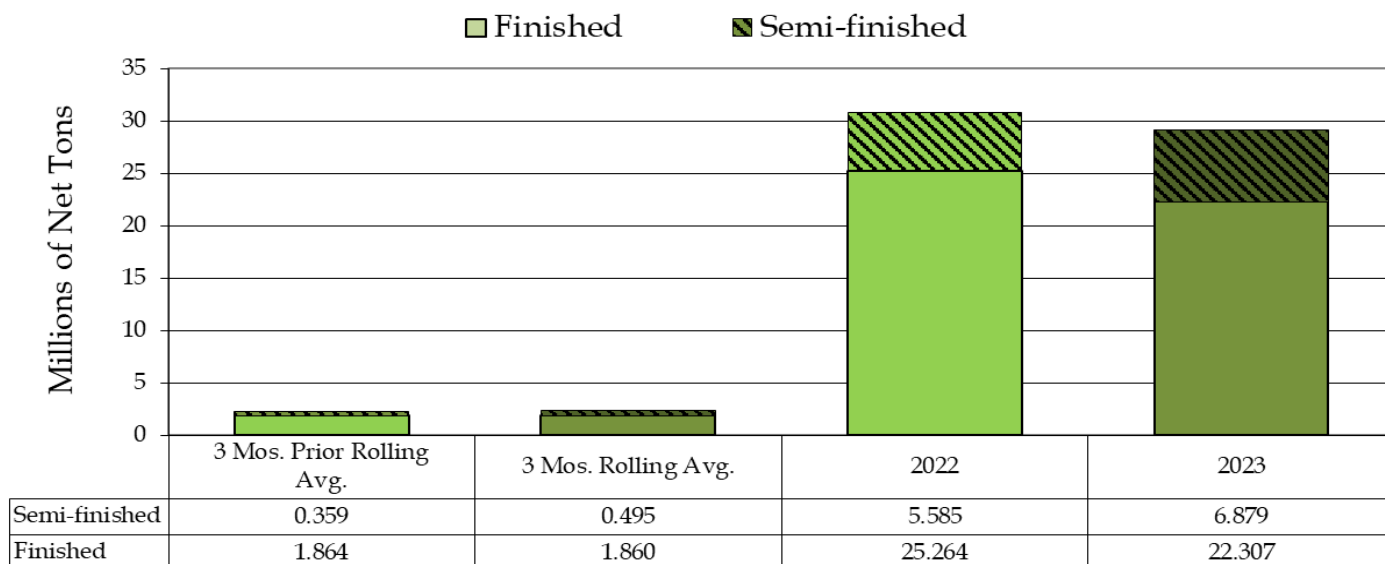
<b>U.S. IMPORTS OF FINISHED STEEL MILL PRODUCTS</b> <b>3 MONTHS ROLLING AVERAGE</b> <b>(thousands of net tons)</b>			
<b>Country</b>	<b>Preliminary 3 Mos. Rolling Avg. Feb. '23 - Dec. '22</b>	<b>Final 3 Mos. Rolling Avg. Nov. '22 - Sep. '22</b>	<b>Current 3 Months vs. 3 Months Prior % Change</b>
Canada	507	494	2.7%
Mexico	264	251	5.1%
South Korea	199	216	-7.8%
Japan	96	95	0.6%
Germany	82	102	-19.3%
Taiwan	65	72	-8.8%
Brazil	62	24	153.7%
China	58	53	11.2%
Algeria	45	13	241.2%
Netherlands	41	56	-26.9%
India	39	42	-5.9%
Italy	37	25	46.6%
Vietnam	35	49	-27.6%
Turkey	31	67	-53.5%
Spain	30	19	55.0%
All Other	268	286	-6.2%
<b>TOTAL Finished Imports</b>	<b>1,860</b>	<b>1,864</b>	<b>-0.2%</b>

## Monthly Imports 2023 vs. 2022



% change finished imports February 2023 vs. February 2022 -6.7%

## 3 Month Rolling Averages and 2023 vs. 2022



% change semi-finished imports 3 Mos. Rolling Avg. vs. 3 Mos. Prior = +38.8%

% change finished imports 3 Mos. Rolling Avg. vs. 3 Mos Prior = -0.2%

% change semi-finished imports 2023 vs. 2022 = +23.2%

% change finished imports 2023 vs. 2022 = -11.7%

-MORE

*AISI serves as the voice of the American steel industry in the public policy arena and advances the case for steel in the marketplace as the preferred material of choice. AISI's membership is comprised of integrated and electric arc furnace steelmakers, and associate members who are suppliers to or customers of the steel industry. For more news about steel and its applications, view AISI's website at [www.steel.org](http://www.steel.org). Follow AISI on [Facebook](#), [LinkedIn](#), [Twitter](#) (@AISISSteel) or [Instagram](#).*

-#####-