



**FOR IMMEDIATE RELEASE**  
**October 25, 2017**

**CONTACT Lisa Harrison**  
**202.452.7115/[lharrison@steel.org](mailto:lharrison@steel.org)**

**STEEL IMPORTS UP 20% YEAR-TO-DATE**  
**Finished Import Market Share YTD at 28%**

**Washington, D.C.** – Based on preliminary Census Bureau data, the American Iron and Steel Institute (AISI) reported today that the U.S. imported a total of 3,051,000 net tons (NT) of steel in September 2017, including 2,438,000 net tons (NT) of finished steel (down 10.3% and 1.4%, respectively, vs. August final data). Year-to-date (YTD) through nine months of 2017, total and finished steel imports are 29,663,000 and 22,890,000 net tons (NT), up 19.6% and 15.7%, respectively, vs. the same period in 2016. Annualized total and finished steel imports in 2017 would be 39.6 and 30.5 million NT, up 19.8% and 15.9%, respectively, vs. 2016. Finished steel import market share was an estimated 27% in September and is estimated at 28% YTD.

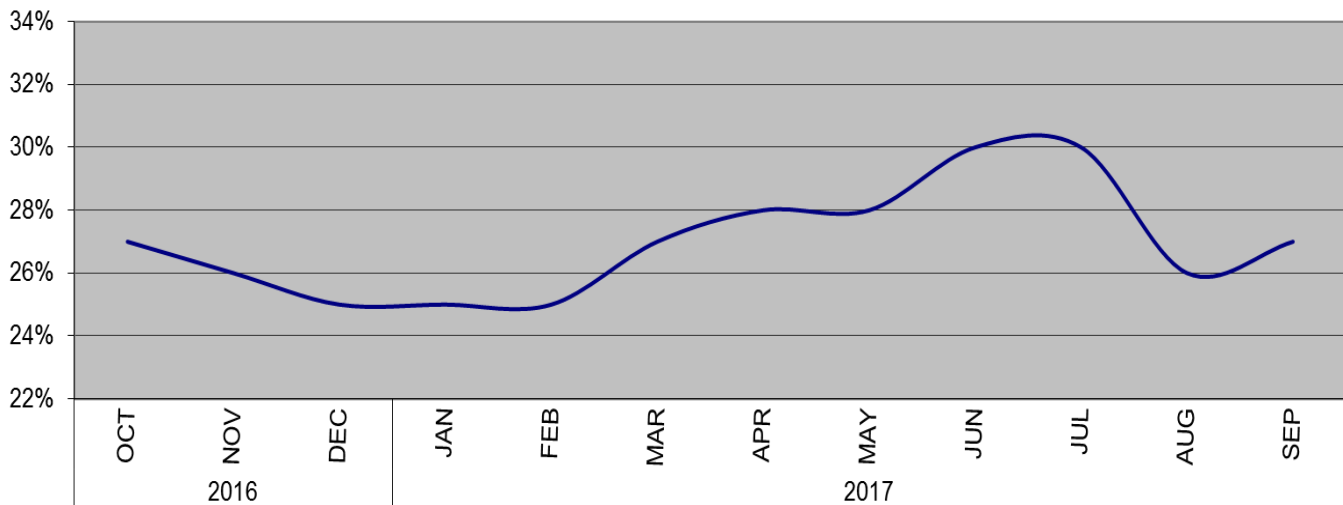
Key finished steel products with significant import increases in September compared to August include reinforcing bars (up 85%), line pipe (up 35%), tin plate (up 31%), oil country goods (up 23%) and plates in coils (up 11%). Major products with significant year-to-date (YTD) increases vs. the same period in 2016 include oil country goods (up 255%), line pipe (up 60%), standard pipe (up 45%), mechanical tubing (up 32%), cold rolled (up 28%), sheets and strip all other metallic coatings (up 26%), sheets and strip hot dipped galvanized (up 22%) and hot rolled bars (up 19%).

Steel Mill Product	Sep. 2017 (prelim.)	Aug. 2017 final	% var Sep. vs. Aug.	(9 mo.) YTD 2017	(9 mo.) YTD 2016	% var '17 vs. '16	2017 Ann.	2016 12 mo.	% var 2017 vs 2016
Ingots and Billets and Slabs	609,413	922,487	-33.9%	6,740,983	4,988,970	35.1%	8,987,977	6,650,028	35.2%
Sheets & Strip Galv Hot Dipped	265,781	307,681	-13.6%	2,688,335	2,209,700	21.7%	3,584,446	3,098,065	15.7%
Oil Country Goods	328,982	268,550	22.5%	2,577,806	725,747	255.2%	3,437,075	1,152,496	198.2%
Sheets Cold Rolled	227,339	263,258	-13.6%	2,281,740	1,779,166	28.2%	3,042,320	2,537,075	19.9%
Line Pipe	278,437	206,864	34.6%	1,683,579	1,054,572	59.6%	2,244,772	1,371,660	63.7%
Sheets Hot Rolled	172,356	178,961	-3.7%	1,626,347	2,330,782	-30.2%	2,168,463	2,900,012	-25.2%
Bars - Reinforcing	122,321	66,220	84.7%	1,373,283	1,711,213	-19.7%	1,831,044	2,109,511	-13.2%
Wire Rods	92,641	126,622	-26.8%	1,294,816	1,236,519	4.7%	1,726,421	1,593,615	8.3%
Bars - Hot Rolled	77,318	105,114	-26.4%	1,036,079	869,205	19.2%	1,381,439	1,186,085	16.5%
Plates in Coils	112,080	101,047	10.9%	990,240	950,261	4.2%	1,320,320	1,340,487	-1.5%
Sheets & Strip All Other Met. Ctd.	92,293	117,487	-21.4%	977,297	773,062	26.4%	1,303,063	1,033,663	26.1%
Standard Pipe	83,379	97,426	-14.4%	916,433	630,235	45.4%	1,221,911	835,329	46.3%
Structural Shapes Heavy	64,778	85,760	-24.5%	704,713	668,272	5.5%	939,618	875,765	7.3%
Tin Plate	93,682	71,654	30.7%	692,523	641,481	8.0%	923,364	886,955	4.1%
Wire Drawn	64,926	79,841	-18.7%	664,996	679,310	-2.1%	886,661	890,520	-0.4%
Plates Cut Lengths	63,032	76,316	-17.4%	629,707	1,031,606	-39.0%	839,610	1,227,971	-31.6%
Mechanical Tubing	59,181	58,680	0.9%	507,371	383,079	32.4%	676,495	515,558	31.2%
All Other	242,681	266,792	-9.0%	2,277,237	2,141,108	6.4%	3,036,316	2,816,706	7.8%
<b>TOTAL</b>	<b>3,050,620</b>	<b>3,400,758</b>	<b>-10.3%</b>	<b>29,663,487</b>	<b>24,804,290</b>	<b>19.6%</b>	<b>39,551,317</b>	<b>33,021,501</b>	<b>19.8%</b>
<b>SUBTOTAL Finished Imports</b>	<b>2,437,518</b>	<b>2,473,215</b>	<b>-1.4%</b>	<b>22,890,248</b>	<b>19,792,033</b>	<b>15.7%</b>	<b>30,520,331</b>	<b>26,338,393</b>	<b>15.9%</b>

-MORE-

In September, the largest volumes of finished steel imports from offshore were from South Korea (321,000 NT, down 11% from August final), Japan (169,000 NT, up 32%), Germany (151,000 NT, up 53%), Taiwan (120,000 NT, down 2%) and Turkey (112,000 NT, up 5%). For the first nine months of 2017, the largest offshore suppliers were South Korea (2,949,000 NT, down 2% vs. the same period in 2016), Turkey (1,944,000 NT, up 5%), Japan (1,234,000 NT, down 14%), Taiwan (1,026,000 NT, up 36%) and Germany (1,001,000 NT, up 6%). Below are charts on estimated steel import market share in recent months and on finished steel imports from offshore by country.

**Estimated Finished Steel Import Market Share for the Past 12 Months**



**U.S. IMPORTS OF FINISHED STEEL MILL PRODUCTS  
BY COUNTRY OF ORIGIN  
(thousands of net tons)**

COUNTRY	Sep. 2017 (Prelim.)	Aug. 2017 final	% incr. Sep. vs. Aug.	(9 mo.) YTD 2017	(9 mo.) YTD 2016	% incr. '17 vs. '16	2017 Ann.	2016 12 mo.	% incr. 2017 vs. '16
South Korea	321	359	-10.6%	2,949	2,993	-1.5%	3,932	3,812	3.2%
Turkey	112	106	5.4%	1,944	1,854	4.9%	2,592	2,416	7.3%
Japan	169	128	31.7%	1,234	1,436	-14.1%	1,646	1,798	-8.5%
Taiwan	120	122	-1.8%	1,026	755	35.8%	1,368	1,083	26.3%
Germany	151	99	53.0%	1,001	941	6.3%	1,334	1,192	11.9%
Brazil	107	81	32.1%	696	655	6.2%	929	823	12.9%
Russia	78	93	-16.8%	656	215	204.5%	875	310	182.2%
China	57	69	-18.2%	637	676	-5.8%	849	862	-1.5%
All Other	1,323	1,415	-6.5%	12,747	10,266	24.2%	16,996	14,043	21.0%
Total	2,438	2,473	-1.4%	22,890	19,792	15.7%	30,520	26,338	15.9%

-MORE-

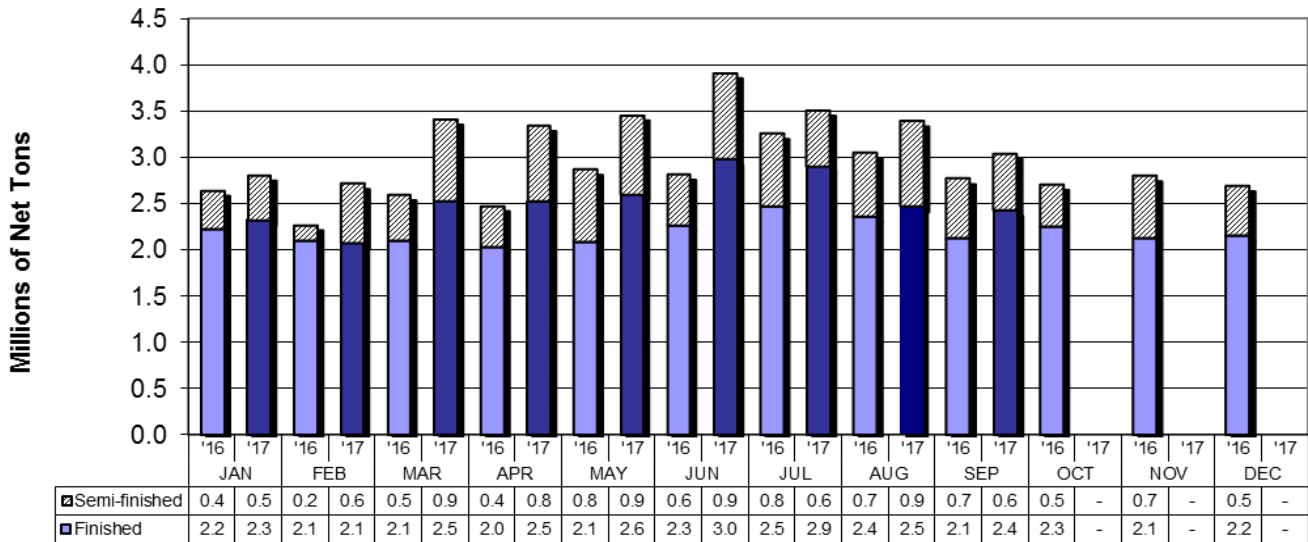
<b>U.S. IMPORTS OF FINISHED STEEL MILL PRODUCTS</b> <b>3 MONTHS ROLLING AVERAGE</b> (thousands of net tons)			
<b>Product</b>	<b>Preliminary 3 Mos. Rolling Avg. Sep. '17 - Jul. '17</b>	<b>Actual 3 Mos. Prior Jun. '17 - Apr. '17</b>	<b>Current 3 Months vs 3 Months Prior % Change</b>
Oil Country Goods	324	318	2.0%
Sheets & Strip Galv. Hot Dipped	299	318	-6.1%
Sheets Cold Rolled	255	260	-2.0%
Line Pipe	238	175	36.1%
Sheets Hot Rolled	198	196	1.1%
Wire Rods	126	167	-24.6%
Bars - Reinforcing	112	135	-16.9%
Plates in Coils	111	129	-14.4%
Sheets & Strip All Other Met. Ctd.	109	119	-8.3%
Bars - Hot Rolled	106	140	-24.7%
All Other	729	749	-2.7%
<b>Total</b>	<b>2,607</b>	<b>2,707</b>	<b>-3.7%</b>

<b>U.S. IMPORTS OF FINISHED STEEL MILL PRODUCTS</b> <b>3 MONTHS ROLLING AVERAGE</b> (thousands of net tons)			
<b>Country</b>	<b>Preliminary 3 Mos. Rolling Avg. Sep. '17 - Jul. '17</b>	<b>Actual 3 Mos. Prior Jun. '17 - Apr. '17</b>	<b>Current 3 Months vs 3 Months Prior % Change</b>
South Korea	340	346	-1.7%
Turkey	158	223	-29.3%
Japan	145	140	3.6%
Germany	133	125	6.1%
Taiwan	120	120	0.5%
Brazil	89	84	6.4%
Russia	86	94	-8.7%
India	74	62	20.2%
China	72	76	-5.7%
Vietnam	65	53	23.7%
All Other	1,324	1,385	-4.4%
<b>Total</b>	<b>2,607</b>	<b>2,707</b>	<b>-3.7%</b>

-MORE-

### Monthly Imports 2017 vs. 2016

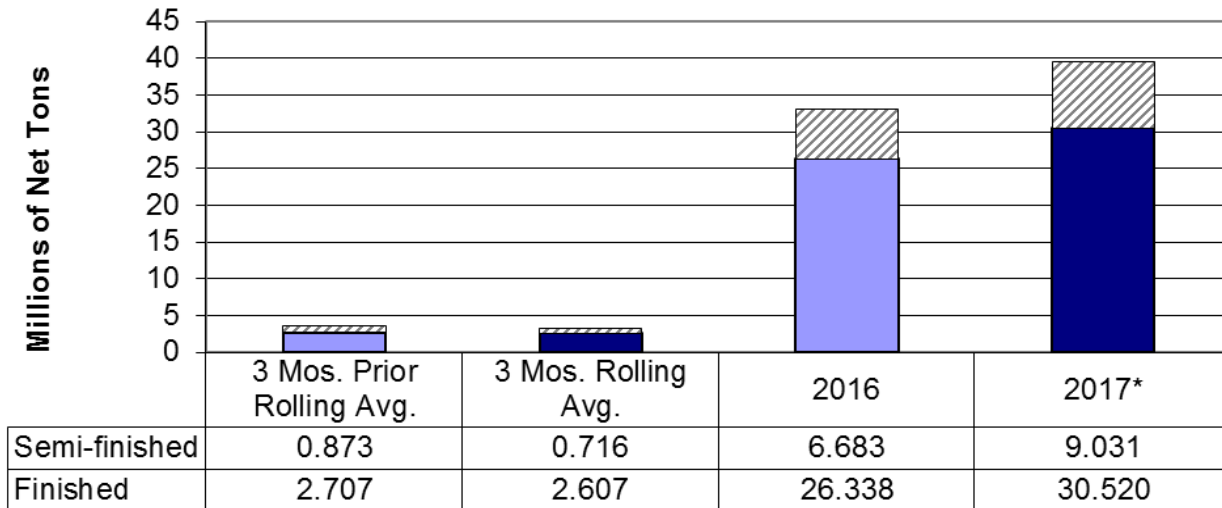
■ Finished    ▨ Semi-finished



% change finished imports September 2017 vs September 2016 = +14.7%

### 3 Month Rolling Averages and 2017 vs. 2016

■ Finished    ▨ Semi-finished



% change finished imports 3 Mos. Rolling Avg. vs. 3 Mos. Prior = -3.7%

% change semi-finished imports 2017 vs 2016 = +35.1%

% change finished imports 2017 vs 2016 = +15.9%

\* annualized

*AISI serves as the voice of the North American steel industry in the public policy arena and advances the case for steel in the marketplace as the preferred material of choice. AISI also plays a lead role in the development and application of new steels and steelmaking technology. AISI is comprised of 19 member companies, including integrated and electric furnace steelmakers, and approximately 120 associate members who are suppliers to or customers of the steel industry. For more news about steel and its applications, view AISI's website at [www.steel.org](http://www.steel.org). Follow AISI on [Facebook](#) or Twitter ([@AISISteel](#)).*

-#####-