



**FOR IMMEDIATE RELEASE**  
January 24, 2012

**CONTACT: NANCY GRAVATT**  
202.452.7115/ [ngravatt@steel.org](mailto:ngravatt@steel.org)

**Preliminary Finished Steel Imports Up 15% in 2011 vs. 2010**  
*Import Market Share at 18%*

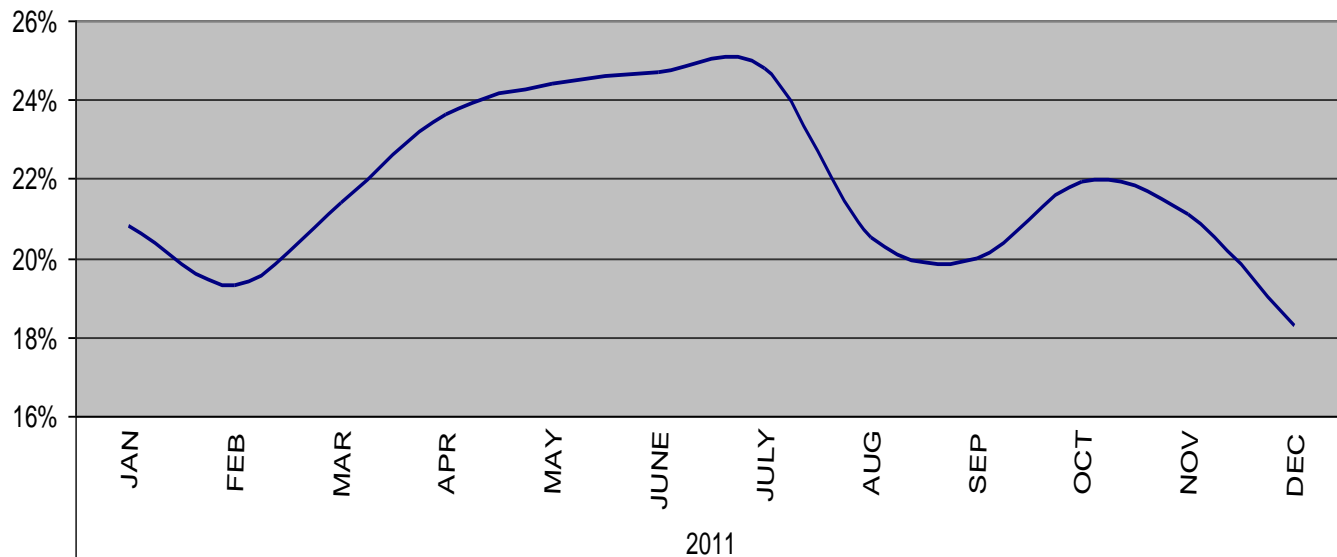
**Washington, D.C.** – Based on preliminary (p) Census Bureau data, the American Iron and Steel Institute (AISI) reported today that the U.S. imported a total of 1,997,000 net tons (NT) of steel in December (down 6%), including 1,510,000 NT of finished steel (down 9%) vs. the November final data. Full-year 2011 total and finished steel imports were 28.4 and 21.8 million NT, respectively, up 19% and 15% vs. 2010. Finished steel import market share in December and for full-year 2011 was an estimated 18% and 22%, respectively.

Key finished steel products with significant import increases in December 2011 vs. November include wire rods (up 49%), reinforcing bar (up 49%), mechanical tubing (up 16%) and sheets and strip all other metallic coated (up 10%). Major products with import increases in excess of 30% in 2011 vs. 2010 include cut length plates (up 55%), mechanical tubing (up 44%), plates in coils (up 33%) and line pipe (up 32%).

Steel Mill Product	Dec. (prelim.)	Nov. final	% var Dec. vs. Nov.	2011 (prelim.)	2010	% var '11 vs. 10	2011 (prelim.)	2010	% var 2011 vs 2010
Ingots and Billets and Slabs	484,119	466,001	3.9%	6,624,279	5,005,064	32.4%	6,624,279	5,005,064	32.4%
Oil Country Goods	201,000	243,082	-17.3%	2,904,026	2,384,004	21.8%	2,904,026	2,384,004	21.8%
Sheets Hot Rolled	175,611	193,704	-9.3%	2,647,388	2,397,458	10.4%	2,647,388	2,397,458	10.4%
Line Pipe	135,310	151,290	-10.6%	1,970,339	1,490,643	32.2%	1,970,339	1,490,643	32.2%
Sheets & Strip Galv HD	111,096	115,028	-3.4%	1,461,332	1,420,686	2.9%	1,461,332	1,420,686	2.9%
Sheets Cold Rolled	85,376	105,401	-19.0%	1,384,489	1,221,365	13.4%	1,384,489	1,221,365	13.4%
Plates in Coils	86,390	129,242	-33.2%	1,359,861	1,022,372	33.0%	1,359,861	1,022,372	33.0%
Bars - Hot Rolled	101,548	98,066	3.6%	1,323,117	1,049,046	26.1%	1,323,117	1,049,046	26.1%
Plates Cut Lengths	76,577	106,482	-28.1%	1,162,357	749,357	55.1%	1,162,357	749,357	55.1%
Wire Rods	69,255	46,549	48.8%	1,014,713	1,317,772	-23.0%	1,014,713	1,317,772	-23.0%
Standard Pipe	50,526	60,000	-15.8%	830,475	777,599	6.8%	830,475	777,599	6.8%
Bars - Reinforcing	53,051	35,658	48.8%	636,768	516,678	23.2%	636,768	516,678	23.2%
Wire Drawn	43,806	49,397	-11.3%	634,913	631,547	0.5%	634,913	631,547	0.5%
Mechanical Tubing	53,723	46,420	15.7%	614,688	425,779	44.4%	614,688	425,779	44.4%
Sheets & Strip All Other	41,722	37,937	10.0%	532,531	413,537	28.8%	532,531	413,537	28.8%
Structural Shapes Heavy	21,328	23,891	-10.7%	512,085	522,001	-1.9%	512,085	522,001	-1.9%
Tin Plate	28,338	32,906	-13.9%	403,008	506,437	-20.4%	403,008	506,437	-20.4%
All Other	177,731	179,452	-1.0%	2,431,265	2,077,807	17.0%	2,431,265	2,077,807	17.0%
<b>TOTAL</b>	<b>1,996,507</b>	<b>2,120,506</b>	<b>-5.8%</b>	<b>28,447,634</b>	<b>23,929,152</b>	<b>18.9%</b>	<b>28,447,634</b>	<b>23,929,152</b>	<b>18.9%</b>
<b>SUBTOTAL Finished Imports</b>	<b>1,510,207</b>	<b>1,650,875</b>	<b>-8.5%</b>	<b>21,767,725</b>	<b>18,857,005</b>	<b>15.4%</b>	<b>21,767,725</b>	<b>18,857,005</b>	<b>15.4%</b>

In December, the largest volumes of finished steel imports from offshore were from South Korea (201,000 NT, up 4%), Japan (103,000 NT, down 10%), China (86,000 NT, up 4%), Germany (84,000 NT, up 30%) and India (52,000 NT, down 21%). For full-year 2011 (p), the largest offshore suppliers were South Korea (2,835,000 NT, up 39%), Japan (1,452,000 NT, up 10%) and China (1,230,000 NT, up 43%). Below are charts on estimated steel import market share in recent months and on finished steel imports from offshore by country.

**Estimated Finished Steel Import Market Share for the Past 12 Months**



**U.S. IMPORTS OF FINISHED STEEL MILL PRODUCTS  
BY COUNTRY OF ORIGIN  
(thousands of net tons)**

COUNTRY	Dec. 2011	Nov. 2011	% incr. Dec. vs Nov.	2011 Prelim.	2010	% incr. '11 YTD vs. '10	2011 Prelim.	2010	% incr. 2011 vs. '10
South Korea	201	193	<b>3.9%</b>	2,835	2,041	<b>38.9%</b>	2,835	2,041	<b>38.9%</b>
Japan	103	115	<b>-10.2%</b>	1,452	1,325	<b>9.6%</b>	1,452	1,325	<b>9.6%</b>
China	86	82	<b>4.2%</b>	1,230	858	<b>43.4%</b>	1,230	858	<b>43.4%</b>
Germany	84	65	<b>29.7%</b>	953	879	<b>8.4%</b>	953	879	<b>8.4%</b>
Turkey	66	24	<b>174.4%</b>	716	582	<b>23.2%</b>	716	582	<b>23.2%</b>
India	52	66	<b>-21.0%</b>	716	713	<b>0.4%</b>	716	713	<b>0.4%</b>
Netherlands	49	108	<b>-54.9%</b>	570	554	<b>2.9%</b>	570	554	<b>2.9%</b>
All Other	869	997	<b>-12.8%</b>	13,295	11,906	<b>11.7%</b>	13,295	11,906	<b>11.7%</b>
Total	1,510	1,651	<b>-8.5%</b>	21,768	18,857	<b>15.4%</b>	21,768	18,857	<b>15.4%</b>

**U.S. IMPORTS OF FINISHED STEEL MILL PRODUCTS  
3 MONTHS ROLLING AVERAGE  
(thousands of net tons)**

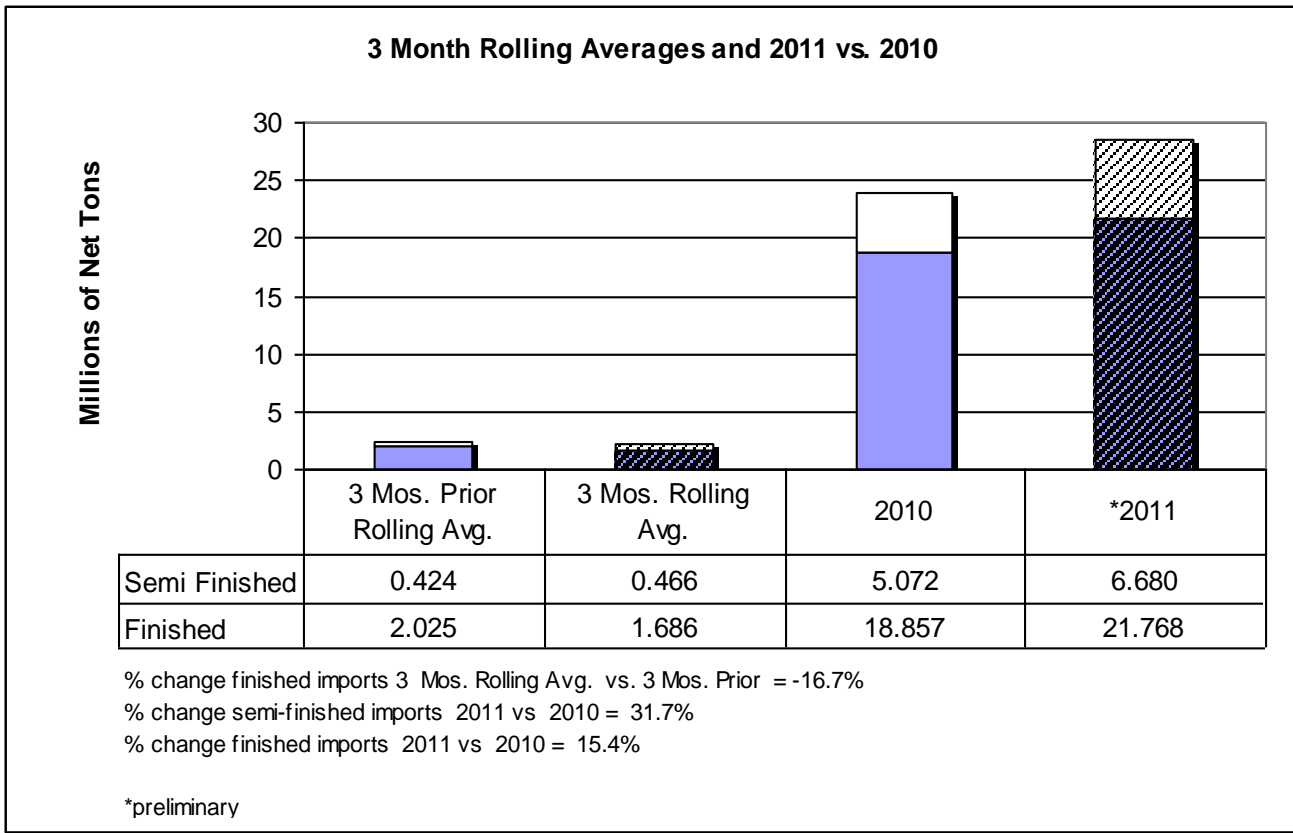
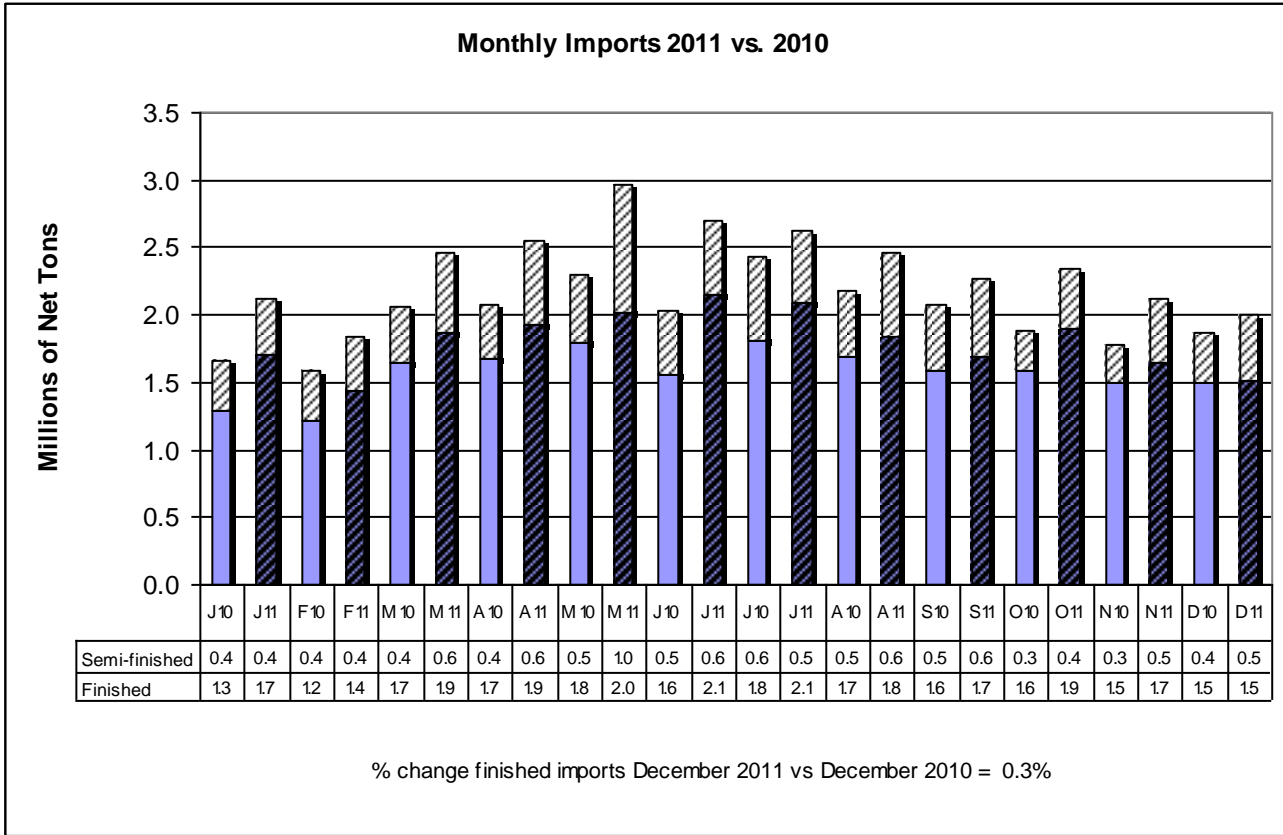
<b>Product</b>	<b>Preliminary 3 Mos. Rolling Avg. Dec. 11 - Oct 11</b>	<b>Actual 3 Mos. Prior Sep. 11 - Jul. 11</b>	<b>Current 3 Months vs 3 Months Prior % Change</b>
Oil Country Goods	239	263	-9.3%
Sheets Hot Rolled	209	224	-6.7%
Line Pipe	159	164	-3.3%
Sheets & Strip Galv Hot Dipped	116	133	-12.7%
Plates in Coils	109	122	-10.2%
Bars - Hot Rolled	105	111	-5.5%
Sheets Cold Rolled	103	119	-13.5%
Plates Cut Lengths	102	123	-17.2%
Wire Rods	63	77	-17.5%
Standard Pipe	58	72	-19.2%
All Other	423	618	-31.6%
<b>Total</b>	<b>1,686</b>	<b>2,025</b>	<b>-16.8%</b>

**U.S. IMPORTS OF FINISHED STEEL MILL PRODUCTS  
3 MONTHS ROLLING AVERAGE  
(thousands of net tons)**

<b>Country</b>	<b>Preliminary 3 Mos. Rolling Avg. Dec. 11 - Oct 11</b>	<b>Actual 3 Mos. Prior Sep. 11 - Jul. 11</b>	<b>Current 3 Months vs 3 Months Prior % Change</b>
South Korea	203	239	-15.2%
Japan	113	118	-4.1%
China	95	128	-26.0%
Germany	78	78	0.5%
Turkey	49	39	26.2%
India	54	62	-13.6%
Netherlands	72	45	59.0%
Taiwan	46	54	-14.5%
United Kingdom	30	31	-3.2%
Ukraine	23	18	23.4%
All Other	923	1,212	-23.8%
<b>Total</b>	<b>1,686</b>	<b>2,025</b>	<b>-16.8%</b>

Source: U.S. Department of Commerce

-MORE



AISI serves as the voice of the North American steel industry in the public policy arena and advances the case for steel in the marketplace as the preferred material of choice. AISI also plays a lead role in the development and application of new steels and steelmaking technology. AISI is comprised of 25 member companies, including integrated and electric furnace steelmakers, and 124 associate members who are suppliers to or customers of the steel industry. AISI's member companies represent approximately 80 percent of both U.S. and North American steel capacity. For more news about steel and its applications, view AISI's Web site at [www.steel.org](http://www.steel.org).

-#####-