



**FOR IMMEDIATE RELEASE**  
December 28, 2011

**CONTACT: NANCY GRAVATT**  
202.452.7115/ [ngravatt@steel.org](mailto:ngravatt@steel.org)

**Preliminary Steel Imports Down 10% in November**  
*Import Market Share at 20%*

**Washington, D.C.** – Based on preliminary Census Bureau data, the American Iron and Steel Institute (AISI) reported today that the U.S. imported a total of 2,107,000 net tons (NT) of steel in November (down 10%), including 1,646,000 NT of finished steel (down 13%) vs. the October final data. Annualized total and finished steel imports in 2011 would be 28.8 and 22.1 million NT, respectively, up 21% and 17% vs. 2010. Finished steel import market share in November was an estimated 20% and is 22% year-to-date (YTD).

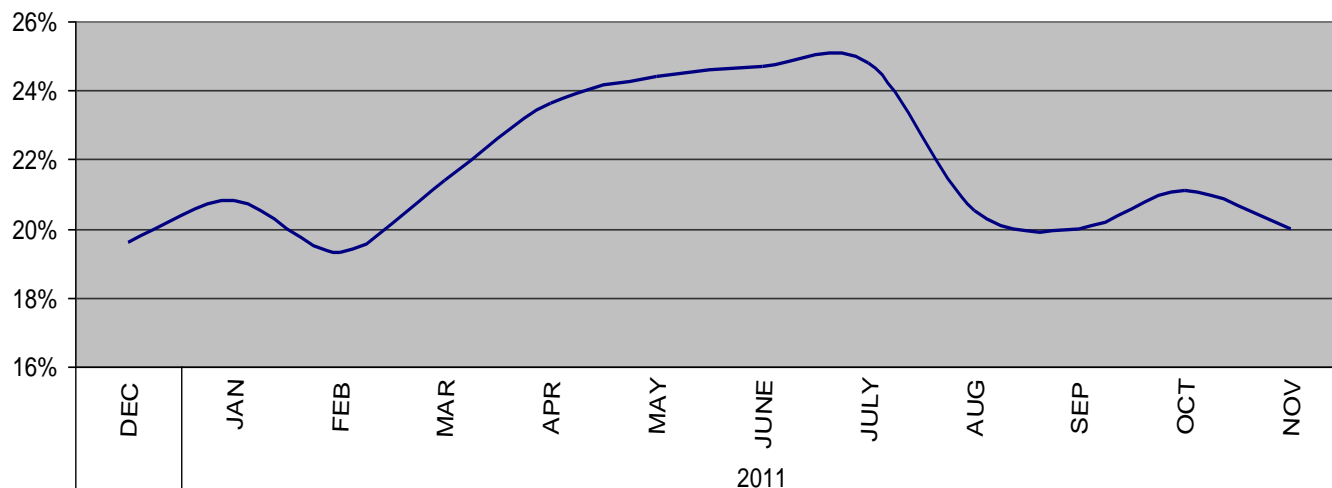
Key finished steel products with significant import increases in November 2011 compared to October include plates in coils (up 15%) and reinforcing bars (up 10%). Major products with significant YTD import increases vs. the same period last year include cut length plates (up 61%), plates in coils (up 37%), line pipe (up 31%), hot rolled bar (up 28%) and oil country goods (up 22%).

Steel Mill Product	Nov. (prelim.)	Oct. final	% var Nov. vs. Oct.	(11 mo.) YTD 2011	(11 mo.) YTD 2010	% var '11 vs. 10	2011 Annualized	2010 12 mo.	% var 2011 ann. vs 2010 12 mo.
Ingots and Billets and Slabs	458,135	438,192	4.6%	6,132,294	4,643,203	32.1%	6,689,776	5,005,064	33.7%
Oil Country Goods	242,437	272,688	-11.1%	2,702,381	2,213,460	22.1%	2,948,052	2,384,004	23.7%
Sheets Hot Rolled	193,683	256,682	-24.5%	2,471,756	2,180,501	13.4%	2,696,461	2,397,458	12.5%
Line Pipe	150,754	189,281	-20.4%	1,834,493	1,399,893	31.0%	2,001,265	1,490,643	34.3%
Sheets & Strip Galv Hot Dip.	114,908	122,184	-6.0%	1,350,116	1,337,617	0.9%	1,472,854	1,420,686	3.7%
Sheets Cold Rolled	104,996	117,573	-10.7%	1,298,708	1,106,017	17.4%	1,416,773	1,221,365	16.0%
Plates in Coils	129,126	112,004	15.3%	1,273,355	930,559	36.8%	1,389,115	1,022,372	35.9%
Bars - Hot Rolled	97,914	115,619	-15.3%	1,221,416	951,553	28.4%	1,332,454	1,049,046	27.0%
Plates Cut Lengths	104,417	122,558	-14.8%	1,083,715	675,217	60.5%	1,182,234	749,357	57.8%
Wire Rods	46,549	73,724	-36.9%	945,458	1,237,339	-23.6%	1,031,408	1,317,772	-21.7%
Standard Pipe	59,699	64,426	-7.3%	779,648	722,100	8.0%	850,525	777,599	9.4%
Wire Drawn	49,317	52,364	-5.8%	591,027	584,323	1.1%	644,757	631,547	2.1%
Bars - Reinforcing	35,636	32,317	10.3%	583,694	481,119	21.3%	636,757	516,678	23.2%
Mechanical Tubing	46,359	62,324	-25.6%	560,905	384,426	45.9%	611,896	425,779	43.7%
Sheets & Strip All Other Met.Ctd.	37,937	57,090	-33.5%	490,809	391,100	25.5%	535,428	413,537	29.5%
Structural Shapes Heavy	23,891	33,832	-29.4%	490,757	480,043	2.2%	535,371	522,001	2.6%
Tin Plate	32,896	31,876	3.2%	374,660	445,398	-15.9%	408,720	506,437	-19.3%
All Other	178,717	185,374	-3.6%	2,252,805	1,893,764	19.0%	2,457,606	2,077,806	18.3%
<b>TOTAL</b>	<b>2,107,371</b>	<b>2,340,108</b>	<b>-9.9%</b>	<b>26,437,997</b>	<b>22,057,632</b>	<b>19.9%</b>	<b>28,841,452</b>	<b>23,929,151</b>	<b>20.5%</b>
<b>SUBTOTAL Finished Imports</b>	<b>1,645,746</b>	<b>1,897,991</b>	<b>-13.3%</b>	<b>20,252,389</b>	<b>17,352,077</b>	<b>16.7%</b>	<b>22,093,515</b>	<b>18,857,005</b>	<b>17.2%</b>

-MORE-

In November, the largest volumes of finished steel imports from offshore were from South Korea (193,000 NT, down 10%), Japan (115,000 NT, down 6%), The Netherlands (108,000 NT, up 84%), China (82,000 NT, down 29%) and India (66,000 NT, up 49%). For the first 11 months of 2011, the largest offshore suppliers have been South Korea (2,634,000 NT, up 43%), Japan (1,349,000 NT, up 10%) and China (1,144,000 NT, up 44%). Below are charts on estimated steel import market share in recent months and on finished steel imports from offshore by country.

**Estimated Finished Steel Import Market Share for the Past 12 Months**



**U.S. IMPORTS OF FINISHED STEEL MILL PRODUCTS  
BY COUNTRY OF ORIGIN  
(thousands of net tons)**

COUNTRY	Nov. 2011	Oct. 2011	% incr. Nov. vs Oct.	(11 mo.) YTD 2011	(11 mo.) YTD 2010	% incr. '11 YTD vs. '10	2011 full year (est.)	2010 Annual	% incr. 2011 an. vs. '10
South Korea	193	214	<b>-9.6%</b>	2,634	1,846	<b>42.7%</b>	2,874	2,041	<b>40.8%</b>
Japan	115	122	<b>-5.8%</b>	1,349	1,223	<b>10.3%</b>	1,472	1,325	<b>11.1%</b>
China	82	116	<b>-29.0%</b>	1,144	794	<b>44.1%</b>	1,248	858	<b>45.5%</b>
Germany	63	85	<b>-25.6%</b>	867	814	<b>6.5%</b>	946	879	<b>7.6%</b>
India	66	44	<b>49.4%</b>	664	686	<b>-3.3%</b>	724	713	<b>1.6%</b>
Turkey	24	58	<b>-58.5%</b>	650	561	<b>15.9%</b>	710	582	<b>22.0%</b>
Netherlands	108	59	<b>83.7%</b>	521	489	<b>6.6%</b>	569	554	<b>2.7%</b>
All Other	994	1,200	<b>-17.2%</b>	12,422	10,939	<b>13.6%</b>	13,552	11,906	<b>13.8%</b>
<b>Total</b>	<b>1,646</b>	<b>1,898</b>	<b>-13.3%</b>	<b>20,252</b>	<b>17,352</b>	<b>16.7%</b>	<b>22,094</b>	<b>18,857</b>	<b>17.2%</b>

**U.S. IMPORTS OF FINISHED STEEL MILL PRODUCTS  
3 MONTHS ROLLING AVERAGE  
(thousands of net tons)**

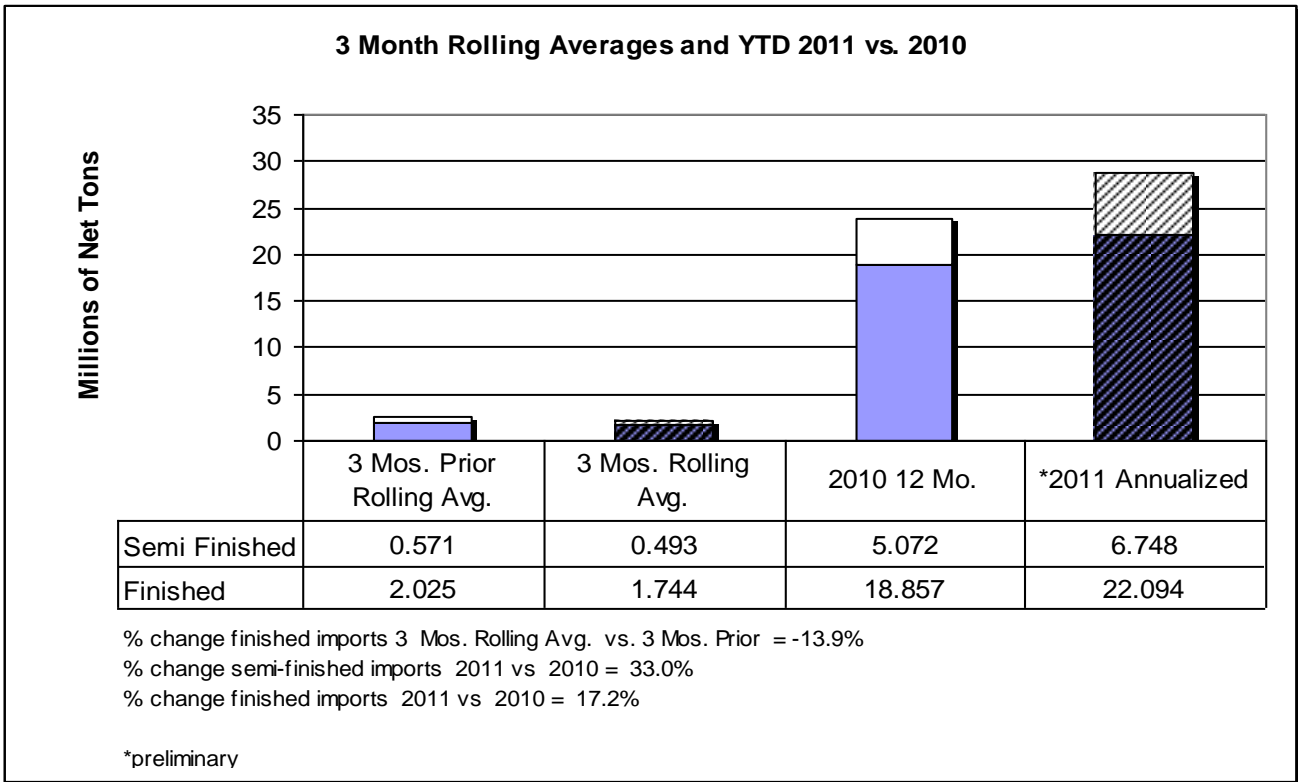
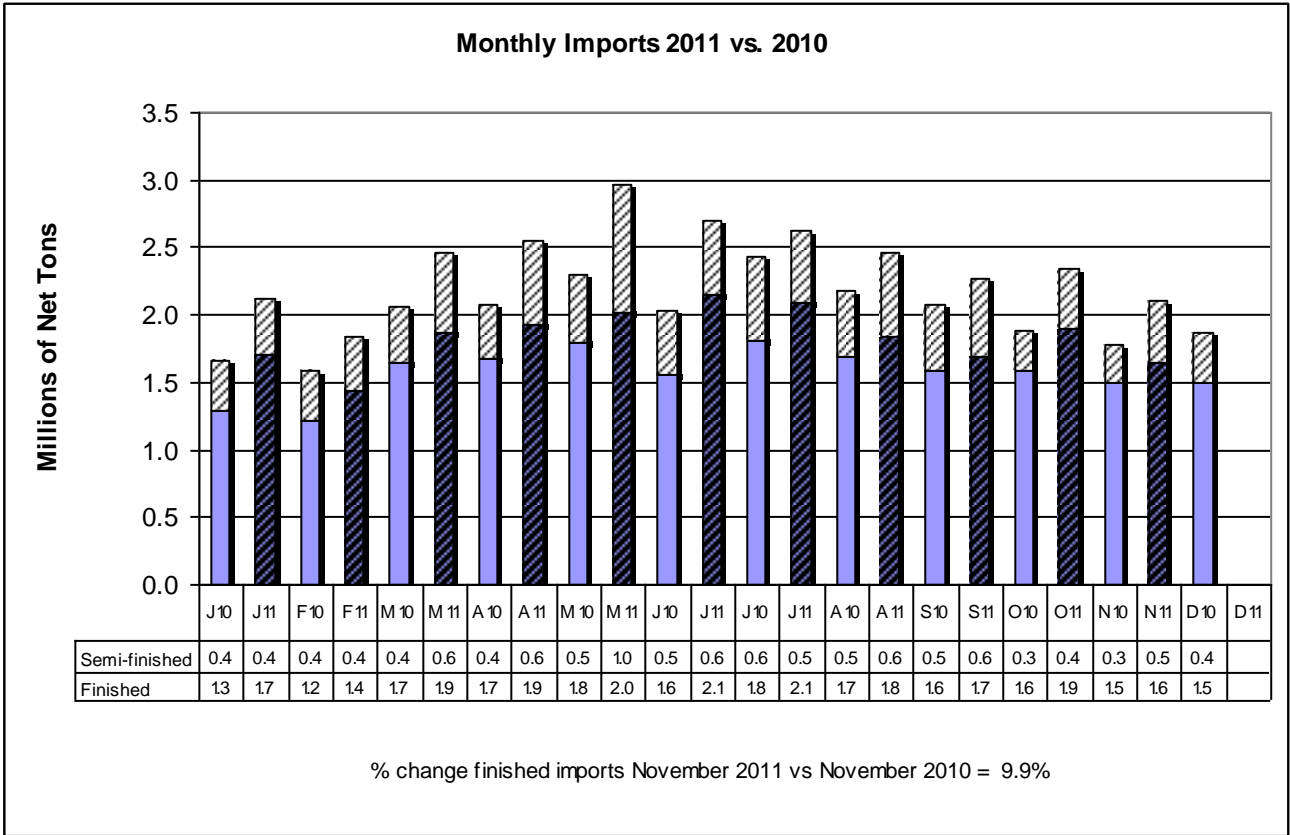
<b>Product</b>	<b>Preliminary 3 Mos. Rolling Avg. Nov. 11 - Sep 11</b>	<b>Actual 3 Mos. Prior Aug. 11 - Jun. 11</b>	<b>Current 3 Months vs 3 Months Prior % Change</b>
Oil Country Goods	257	268	-4.1%
Sheets Hot Rolled	204	246	-17.1%
Line Pipe	173	177	-2.3%
Sheets & Strip Galv Hot Dip.	118	142	-16.9%
Plates Cut Lengths	115	118	-2.5%
Plates in Coils	114	143	-20.3%
Sheets Cold Rolled	108	129	-16.3%
Bars - Hot Rolled	103	122	-15.6%
Wire Rods	62	95	-34.7%
Standard Pipe	62	77	-19.5%
All Other	428	508	-15.7%
<b>Total</b>	<b>1,744</b>	<b>2,025</b>	<b>-13.9%</b>

**U.S. IMPORTS OF FINISHED STEEL MILL PRODUCTS  
3 MONTHS ROLLING AVERAGE  
(thousands of net tons)**

<b>Country</b>	<b>Preliminary 3 Mos. Rolling Avg. Nov. 11 - Sep 11</b>	<b>Actual 3 Mos. Prior Aug. 11 - Jun. 11</b>	<b>Current 3 Months vs 3 Months Prior % Change</b>
South Korea	207	276	-25.0%
Japan	120	119	0.8%
China	102	146	-30.1%
The Netherlands	76	43	76.7%
Germany	71	77	-7.8%
Australia	60	53	13.2%
India	53	62	-14.5%
Taiwan	49	62	-21.0%
Russia	41	87	-52.9%
Turkey	38	58	-34.5%
All Other	927	1,042	-11.0%
<b>Total</b>	<b>1,744</b>	<b>2,025</b>	<b>-13.9%</b>

Source: U.S. Department of Commerce

-MORE



AISI serves as the voice of the North American steel industry in the public policy arena and advances the case for steel in the marketplace as the preferred material of choice. AISI also plays a lead role in the development and application of new steels and steelmaking technology. AISI is comprised of 25 member companies, including integrated and electric furnace steelmakers, and 120 associate members who are suppliers to or customers of the steel industry. AISI's member companies represent approximately 80 percent of both U.S. and North American steel capacity. For more news about steel and its applications, view AISI's Web site at [www.steel.org](http://www.steel.org).

-#####-