



PROFILE

OF THE AMERICAN IRON AND STEEL INSTITUTE

2010–2011



American Iron and Steel Institute

2010–2011 AISI Officers

Chairman of the Board

Daniel R. DiMicco

Chairman, Chief Executive Officer
Nucor Corporation
Charlotte, NC

Vice Chairman

David Britten

President
SSAB Americas
Lisle, IL

Vice Chairman

Regulo Salinas

Vice President
Ternium Mexico
N.L., Mexico

Vice Chairman

James L. Wainscott

Chairman, President and
Chief Executive Officer
AK Steel Corporation
West Chester, OH

President and CEO

Thomas J. Gibson

President and Chief Executive
Officer
American Iron and Steel Institute
Washington, D.C.

General Counsel and Secretary

Kevin M. Dempsey

Senior Vice President, Public Policy
and General Counsel
American Iron and Steel Institute
Washington, D.C.

Treasurer

Lawrence W. Kavanagh

President
Steel Market Development Institute
American Iron and Steel Institute
Washington, D.C.

CONTENTS

Foreward

- 1 American Steel: Strength for our Future**
- 2 Building a Sustainable Future**
- 4 Global Leader in Labor Productivity**
- 6 Steel's Presence Throughout America**
 - 7 Automotive
 - 8 Construction
 - 11 Container
 - 12 Steel and National Security
- 14 Breakthrough Technologies**
- 18 Directory of AISI and its Member Companies**

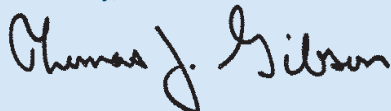
A Message from AISI President and CEO Thomas J. Gibson

America stands at a crossroads whereby our future will be determined by our commitment to restoring America's economic strength and prosperity. A central strategy to strengthen our economy and competitiveness is to have a healthy and growing manufacturing sector. The American Iron and Steel Institute (AISI) is proud of its history of advocating on behalf of the domestic steel industry, a sector that is fundamental to the strength of American manufacturing and to America's economic and national security.

In the pages that follow, you will find a profile of the American steel industry: who we are, the achievements of our companies and their skilled workers, and our commitment to sustainability, which is reflected in our products and our performance. Steel's strength and versatility have helped to establish it as the material of choice in America's energy and transportation systems, the skyscrapers that grace our cities and the containers that help protect our food supply. Likewise, the new generation of advanced high-strength steel is contributing to the rapidly growing fleet of highly fuel-efficient vehicles on our roads and highways. These and numerous other steel applications are highlighted in the **Profile of the American Iron and Steel Institute 2010–2011**.

In addition to this industry profile and the directory of AISI member companies that follows, we encourage you to also visit www.steel.org to find out more about America's hi-tech, innovative and globally competitive steel industry.

Sincerely,

A handwritten signature in black ink that reads "Thomas J. Gibson". The signature is written in a cursive, flowing style.

THOMAS J. GIBSON

President and CEO, American Iron and Steel Institute (AISI)



American Steel—Strength for our Future

The American steel industry continues to be a cornerstone of the American economy.

The backbone of manufacturing, steel is a strategic industry, essential to America's economic growth and stability. The steel sector helped build the face of America, engendering a sense of national pride through famous landmarks, such as the Golden Gate Bridge welcoming visitors to our western states, the St. Louis Arch at the crossroads of America and the Chrysler Building that gives a unique flourish to New York City's skyline.

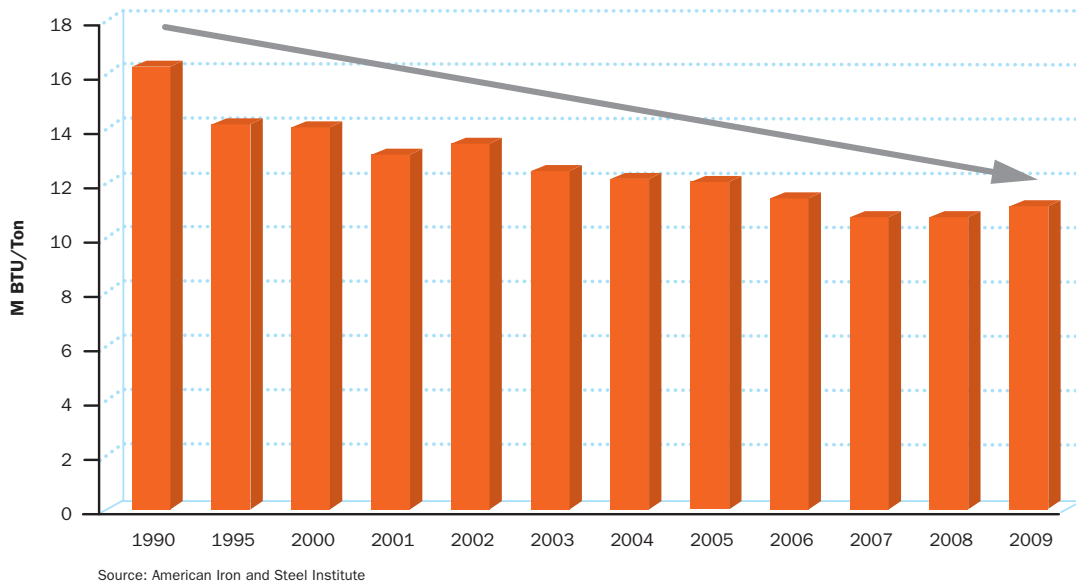
Not only is it an essential material in these American treasures, steel is fundamental to American society and our modern way of life. Our nation's energy supply, transportation system, urban centers, clean water and safe food supply all depend on steel. Innovation and technology have transformed America's 21st century steel industry into a world leader in quality, performance and sustainability.



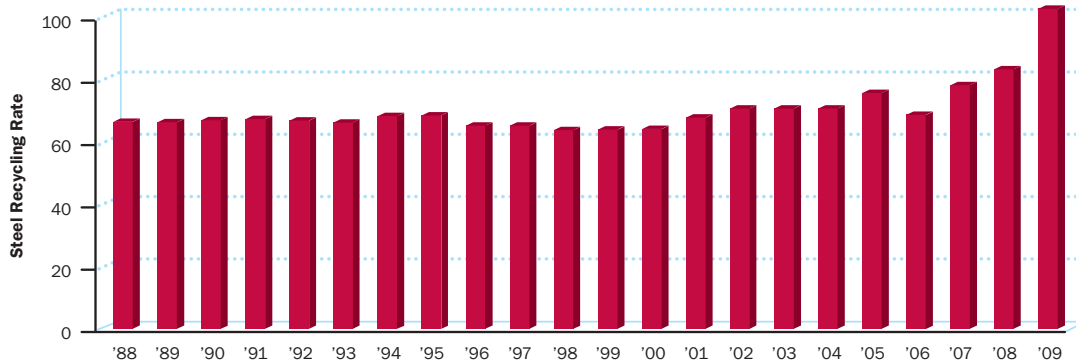
Building a Sustainable Future

The American steel industry has had a long-standing commitment to sustainability in both its products and its practices. This commitment is backed by significant investment in state-of-the-art facilities that improve energy efficiency, reduce carbon emissions and heighten productivity. By deploying new steelmaking technologies and through the innovations of the workers on the plant floor, the industry has reduced energy intensity per ton of steel produced by 30 percent and CO₂ emissions by 35 percent since 1990. In fact, the steel industry is the only significant industry in the U.S. that reduced its total energy consumption while increasing its production from 1990 to 2008.

The Steel Industry Improved its Energy Efficiency by 30% Since 1990



Steel Recycling Rates (1998–2008)



Source: Steel Recycling Institute

↑ **Steel's infinite recyclability sets it apart from other materials in that it can be recycled again and again without the loss of its quality. Its recycling rate also far surpasses that of other materials. The chart above shows steel's overall recycling rate through 2009, the most recent full-year data available.**

Recycling

The overall recycling rate of steel has reached an all-time high of 103 percent based on the most recent data compiled by the Steel Recycling Institute (SRI) through 2009. More than 66 million tons of domestic steel scrap were charged into furnaces. All steel is 100 percent recyclable and more steel is recycled each year than aluminum, copper, paper, glass and plastic combined.

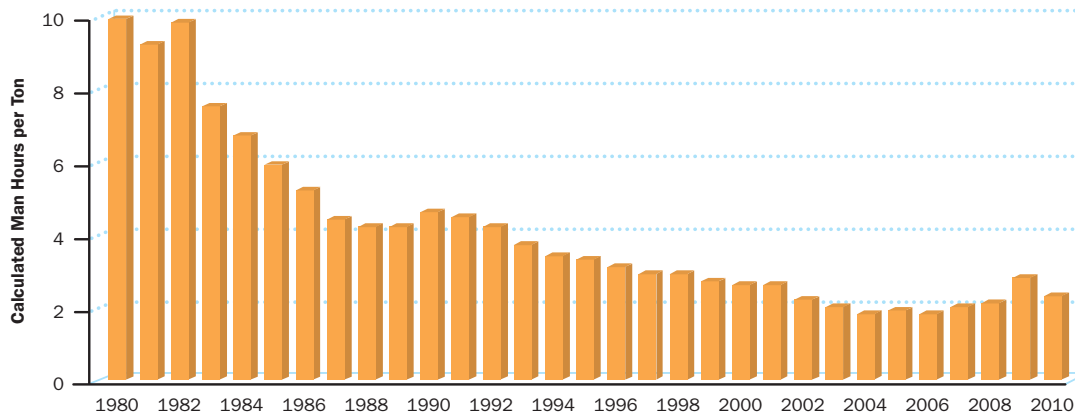
Steel is the engine that drives the recycling of many consumer goods, as evidenced by recycling rates for the following products: automobiles (106 percent), appliances (90 percent), steel containers (65.2 percent), structural steel (97.5 percent) and construction reinforcement steel (70 percent). Recycling rates for automobiles are often near or over 100 percent, as older vehicles being recycled are often heavier than new cars, which are lighter and more fuel-efficient through the use of advanced high-strength steels.

As a result of the steel industry's commitment to sustainability, we are aggressively seeking ways to reduce our environmental footprint even while producing the advanced and highly recyclable steel that our economy needs. In fact, the American steel sector has been recognized as having the steepest decline of total air emissions among nine manufacturing sectors studied in the U.S. Environmental Protection Agency's (EPA) 2008 Sector Performance Report. A helpful tool that the industry is using as part of this process is the Life Cycle Assessment (LCA) approach, which is essential to measuring the real environmental impact of a material. Among other things, LCA considers the total environmental impacts generated by the production, as well as use and end-of-life (recycling or disposal) phases of a product. Steel has life cycle advantages because of its relatively low energy use, high recyclability, the conservation of natural resources, such as water, and the extensive re-use of by-products.

Global Leader in Labor Productivity

For every one of the steel industry’s 135,000 direct jobs, the steel sector generates seven jobs in upstream and downstream industries, adding an additional 945,000 jobs to the economy. Labor productivity has seen a five fold increase since the early 1980s, going from an average of 10.1 man-hours per finished ton to an average of two man-hours per finished ton of steel in 2010. Many North American plants are producing a ton of finished steel in less than one man-hour. These achievements are only possible through a highly-skilled workforce. In that regard, member companies of the American Iron and Steel Institute are committed to continuous improvement in safety and health and to achieving an injury-free workplace.

Steel Industry Labor Hours per Tons of Steel (1980–2010)



Source: American Iron and Steel Institute

↑ **The U.S. steel industry is in the top tier of labor productivity worldwide at an average of two man-hours per ton of steel produced, with many facilities producing a ton of steel in less than one man-hour.**

Despite such strong performance by the steel industry and its workforce, American steelmakers’ ability to compete globally is being threatened by nations unwilling to abide by international trade rules set by the World Trade Organization and by American trade laws. Nations that habitually circumvent U.S. anti-dumping and counter-vailing duty laws in order to send unfairly traded imports into our market, must face consequences. To counter such illegal practices, America must establish and enforce trade policies that will truly level the international playing field for all manufacturers, including keeping our trade laws strong and strictly enforcing them.



Our people are our most important asset. AISI works with its member companies to attract and retain a highly skilled workforce, and to support the development and maintenance of healthy, safe and environmentally sound operations and products.

Photo courtesy of ArcelorMittal. Photo by Peter Barreras.

China's currency undervaluation by as much as 40 percent is an example of unfair trade practices which harm the economies of the United States as well as our trading partners by keeping China's export prices artificially low.

American manufacturers, including U.S. steelmakers, can compete with anyone in the world, but we cannot compete with governments. That is why AISI is urging our government leaders to embrace and put in place a national manufacturing strategy. Such an approach can restore our manufacturing sector and create millions of new jobs through a comprehensive program to rebuild our infrastructure, achieve energy independence—which will also significantly reduce our trade deficit—and enforce our trade laws. It must also remove artificial barriers built by our trading partners and ensure that domestic policies are pro-manufacturing.

The North American steel industry consists of healthy, world-class companies that are internationally competitive.

Steel's Presence Throughout America

Steel has long been considered the backbone of the American manufacturing sector, providing an essential material for downstream manufacturers in the automotive, energy, machinery and equipment, container, appliance and rail industries. Steel is a critical building material for the nation's energy, transportation and water infrastructure; and to commercial and residential construction.

In addition, steel products are a critical component in virtually every military platform and are essential to our national defense.

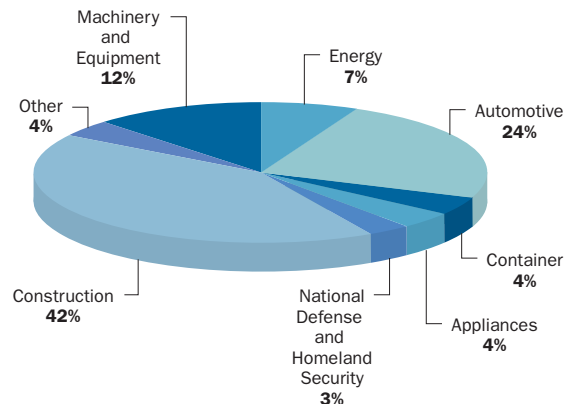
As we enter the second decade of the 21st century, the steel sector is recovering from the worst global recession since World War II. Prior to the global recession, the steel industry enjoyed five consecutive years of robust demand and strong performance. The North American steel industry consists of healthy, world-class companies that are internationally competitive.

In 2011, the steel sector expects to see gradual progress in comparison to 2010, with the market experiencing improvement in steel demand. Following is a summary of selected 2010 statistics for the American steel sector:

2010 U.S. Steel Industry STATISTICAL HIGHLIGHT	
Steel shipments	84 million tons
Imports (finished)	19 million tons
Exports	11 million tons
Apparent steel demand	92 million tons
Direct employment	135,000
Total employment (direct and indirect)	1,080,000
Note: all data are estimates based on latest available data	

Source: American Iron and Steel Institute

2010 Steel Shipments by Market Classification



Source: American Iron and Steel Institute



← **Advanced high-strength steels have made automobiles safer and more fuel-efficient, and have the potential to enable significantly more progress in emissions reductions.**



Photo courtesy of ArcelorMittal Photo Library

Automotive

The American steel industry's continual investment in advanced technologies has led to the introduction of a wide variety of new steels. In fact, 50 percent of the steels used to make automobiles today did not exist just 10 short years ago. Take for example the efficiencies gained from using lighter-weight yet higher-strength steel components in today's increasingly fuel-efficient fleet of automobiles and light trucks.

The total steel in the average vehicle is approximately 63 percent. A substantial portion, about 57 percent, is made up of these new, advanced high-strength steels, which have grown in usage by auto manufacturers by 44 percent over the last decade, according to industry analyst Ducker Worldwide. These sophisticated steels provide a superior combination of high strength, crash energy management, excellent formability and dent resistance, making automobiles safer and more fuel-efficient.

Such mass savings not only conserve material but, when taken in the context of life cycle assessment (LCA), help achieve significant emissions reductions. If, for example, currently available advanced high-strength steels (AHSS) were applied throughout the present U.S. automotive fleet, greenhouse gas emissions from automobiles would be reduced by approximately 12 percent—an amount greater than the emissions generated by the entire American steel industry today. This reduction in emissions is in fact occurring already as automotive designers around the world use increasing amounts of AHSS in their vehicles.

The Steel Market Development Institute's (SMDI—a business unit of AISI) annual Great Designs in Steel seminar is the industry's go-to forum for the latest trends in automotive steel designs. This all-day, multi-track program featured more than 27 technical presentations in 2010 on advanced high-strength steels, life cycle and emissions considerations, and automotive safety and manufacturing technologies. Automotive design engineers increasingly view steel as the innovative material for strong, safe, affordable, environmentally friendly light vehicles and the ideal material for reducing mass.



← Steel framing also offers important protection for American families. Steel framing is durable and it won't warp or twist, and the strength-to-weight ratio of steel is the highest of any residential building material.

Construction

The National Institute of Standards and Technology notes that “steel has become one of the most reliable, most used and most important materials of the age.” As an advanced engineered material, steel is the material of choice by engineers and architects because of its strong performance characteristics, its reliability, its versatility in design and consistency as a product, not to mention its decidedly “green” profile.

Residential and Commercial Construction

For example, the average steel-framed house can be made from four recycled cars, while it takes more than 40 trees to build a wood-framed home. Under the U.S. Green Building Council Leadership in Environmental and Energy Design (LEED®) green building rating system, steel is always a net contributor to the two available points provided for recycled content under *Materials & Resources Credit 4: Recycled Content*. Both commercial and residential steel buildings and steel roofs offer energy efficiency, longer life expectancy, low life-cycle costs and greater durability.

Recent advances in high-performance, pre-painted steel roofing and exterior wall products and systems have made steel attractive to commercial designers and builders. In the residential market, steel's fire-retardant characteristics along with its durability and enhanced visual appeal have increased its market share in the home re-roofing market. SMDI continues its active work with builders and design engineers to standardize and simplify product lines, and to offer sustainable steel solutions for American communities, whether for residential or commercial structures.

Bridges

Bridges connect us as a nation. We need them to transport billions of tons in freight each year. We need them to travel from state to state just as much as we need them to travel coast to coast. We count on bridges to be strong, reliable and low-maintenance.

Yet the Federal Highway Administration (FHWA) estimates that over 25 percent of America's nearly 600,000 bridges are either structurally deficient or functionally obsolete. Steel bridges offer viable design solutions for bridge owners for short, medium and long spans because they are durable, cost-effective, modular, and offer ease of maintenance and construction. In fact, high-performance steels can save up to 18 percent of a bridge project's cost. And new permanent modular bridges are now available that can be constructed in a single weekend. Billions upon billions of dollars are needed to upgrade our crumbling infrastructure, with the Federal Highway Administration estimating a 20-year investment of \$131.7 billion is needed for bridges and highways.

Today, America's bridges are utilizing a new bridge steel plate technology that will help save taxpayer dollars as we rebuild our infrastructure over the next two decades. In addition, designers and engineers can specify new high-performance steels, developed by member companies of AISI in partnership with the Office of Naval Research and the Federal Highway Administration. These steels have superior toughness and can be welded with little or no preheat.



Bridge engineers choose weathering steel for its performance, economical and environmental benefits.





↓ The American public continues to depend on their cars and light trucks to reach business and leisure destinations. Significant steps to repair, improve and expand the nation's transportation system will greatly enhance their driving experience, safety and quality of life.

Transportation/Infrastructure

In a globalized economy, America's infrastructure is important to our competitive edge. Building and fixing America's transportation infrastructure is a priority when you consider that the U.S. Department of Transportation has estimated the overall cost of congestion at \$200 billion a year. It's also important to employment. **The Department of Transportation reports that every \$1 billion federally invested in highway capital supports nearly 35,000 American jobs.**

Steel offers cost-competitive solutions. Roadways that use continuously reinforced concrete pavement (CRCP—reinforced with steel) have been shown to improve fuel efficiency in heavy vehicles by as much as 20 percent. CRCP means increased environmental benefits because it is made of 100 percent recycled material and reduces thermal heat in cities. CRCP also means less time in traffic delays for motorists because of fewer road repairs and reconstruction.

Other areas of infrastructure are steel-intensive, such as pipe for waterways, oil and natural gas exploration and distribution, culverts and water tanks, to name a few examples. The energy sector is expected to be a strong source of steel demand over the next 10 years, particularly as the nation's energy infrastructure is further developed.

Electric Utility Distribution Poles

Steel's profile as a green material has led to growing interest in replacing aging wood electric utility distribution poles with poles made of steel. Steel utility distribution poles have a number of clear advantages over competing materials (treated wood and concrete). These include ease of installation, reliability, durability, life cycle cost and environmental considerations. The primary obstacle to growth is product familiarity. There are approximately 185 million utility distribution poles in North America. An estimated two to four million poles are replaced annually.

Today, more than 900,000 steel distribution poles have been installed, and are now being used by over 600 of 3,100 U.S. and Canadian electric utilities.



Steel is the most recycled material—more than aluminum, paper, glass, copper, and plastic combined.



Container

Steel cans are the most recycled food and beverage package in the world giving steel an important role in providing America with sustainable packaging for foods essential to a healthy diet.

The Canned Food Alliance (CFA), a strategic partner of AISI of which its Steel Market Development Institute is a member, works with Congressional offices and the U.S. Department of Agriculture (USDA) to ensure that canned foods, which are convenient and affordable, play a role in federal food and nutrition programs. Research shows that canned, fresh and frozen fruits and vegetables are nutritionally comparable by the time they are eaten and that all forms contribute to a healthy diet.

The USDA includes canned foods in the Dietary Guidelines for Americans and as part of their Special Supplemental Nutrition program for women, infants and children (WIC). With the rising priority of increasing Americans' consumption of fruits and vegetables, canned foods are playing an important role in access to nutritious, affordable and convenient sources of these food groups. The CFA offers a web site, **www.mealtime.org**, with a tremendous resource of easy and nutritious recipes that utilize canned foods.

The CFA is also a member of the Produce For Better Health Foundation (PBH) and the National Fruit and Vegetable Alliance (NFVA), which includes the Center for Disease Control, U.S. Department of Agriculture, PBH, National Cancer Institute, American Cancer Society, state health departments and other respected organizations. As part of the NFVA, SMDI has met with representatives of the First Lady's *Let's Move Initiative* at the White House and is now working with several partners to place salad bars in thousands of schools over the next five years. Once again, canned foods are playing a role in providing easy, affordable access to nutritious fruits and vegetables essential to a healthy and balanced diet.



↑ **The variety of canned fruits and vegetables available to consumers today makes it easy to create family meals that provide the nutrients necessary for a healthful diet.**

↓ The USS New York, pictured here, contains 24 tons of scrap steel reclaimed and recycled from the World Trade Center.



Photo by Josh Haner/The New York Times/Redux

National Security

It is vital to U.S. national economic security and to our homeland security that America does not become dangerously dependent on offshore sources of supply. Here are some examples of applications for domestic steel vital to America's infrastructure:

- ◆ **Energy infrastructure** such as petroleum refineries, oil and gas pipelines, storage tanks, electricity power generating plants, electric power transmission towers and utility distribution poles;
- ◆ **Transportation security infrastructure** such as highways, bridges, railroads, mass transit systems, airports, seaports and navigation systems;
- ◆ **Health and public safety infrastructure** such as dams and reservoirs, waste and sewage treatment facilities, the public water supply system and, increasingly, residential construction;
- ◆ **Commercial, industrial and institutional complexes** such as manufacturing plants, schools, commercial buildings, chemical processing plants, hospitals, retail stores, hotels, houses of worship and government buildings.

American-made steel and specialty metals are crucial components of U.S. military strength.



← The mine-resistant ambush-protected vehicles (MRAP vehicles) that have emerged in recent years, play an essential role in properly equipping and protecting U.S. troops in parts of the world such as Iraq and Afghanistan, and they utilize special armored steels and mild steels that are produced and developed in America.

Military uses for steel are extensive. Thousands of skilled men and women of the American steel industry work to produce high-quality, cost-competitive products that are used by the military in various applications ranging from aircraft carriers and nuclear submarines to Patriot and Stinger missiles, armor plate for tanks and field artillery pieces, as well as every major military aircraft in production today. Some examples of steel use in defense applications are:

- ◆ The USS New York was built with 24 tons of scrap steel reclaimed and recycled from the World Trade Center.
- ◆ The USS George H.W. Bush, an aircraft carrier named after the 41st President, contains 47,000 tons of structural steel and serves as home to 6,000 Navy personnel.
- ◆ Steel is a strategic material needed to strengthen existing U.S. infrastructure and installations.

All segments of the domestic steel industry contribute directly or indirectly to the defense industrial base. Whether it is missiles, jet aircraft, submarines, helicopters, Humvees® or munitions, American-made steels and specialty metals are crucial components of U.S. military strength. Steel plate is used in the bodies and propulsion systems of the naval fleet. The control cables on virtually all military aircraft, including fighter jets and military transport planes, are produced from steel wire rope. In addition, land-based vehicles such as the Bradley Fighting Vehicle, Abrams Tank and mine-resistant ambush-protected (MRAP) vehicles use significant amounts of steel.

AISI has long identified commitment to sustainability as part of our industry's strategic plan. In line with that vision, the American steel industry is currently conducting research on the next generation of iron and steelmaking technologies that will dramatically reduce or eliminate CO₂ emissions.

Breakthrough Technologies

Because of advances and energy management over the last two decades, U.S. steelmaking processes are highly optimized. Further efforts will be made to continue to achieve incremental improvements, but in order to continue to make major reductions in future energy use, entirely new processes are required.

The American steel industry is conducting research on the next generation of iron and steelmaking technologies that will dramatically reduce or eliminate CO₂ emissions. These new “breakthrough technologies” are being developed over the next 10 to 15 years. Accordingly, any proposed CO₂ reduction regulations must recognize the time required for these technologies to first be fully developed and tested in order for them to become commercially available. Widespread adoption of new technology historically has proven to take from two to three decades in the steel industry.

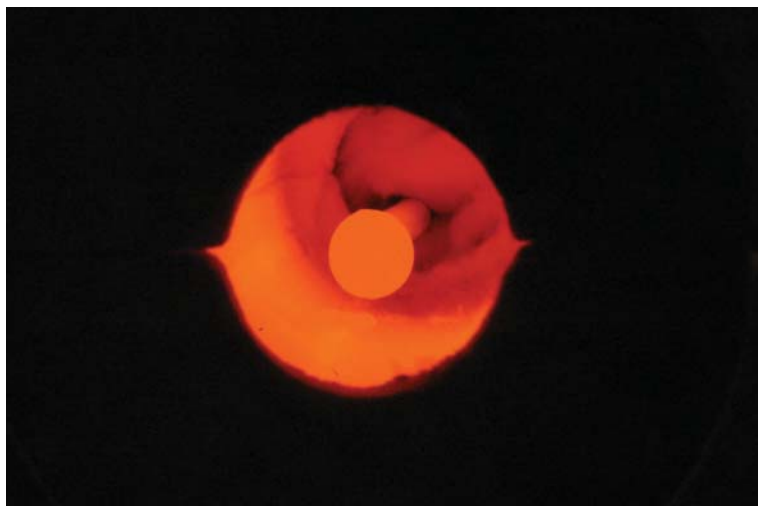
A project at Massachusetts Institute of Technology (MIT) is developing a process to produce iron by Molten Oxide Electrolysis (MOE), an environmentally friendly technology for the production of metals. MOE is a derivative of molten salt electrolysis, a technology that has been producing tonnage metal for over 100 years—aluminum is produced in this manner.

To produce iron by MOE, molten iron oxide is decomposed by the action of electric current into liquid iron and oxygen gas. What sets MOE apart from all other metal-producing technologies is that it is carbon-free and, except for GHG emissions in the production of electricity, generates no significant greenhouse gases.

The team at MIT has succeeded in demonstrating the technical viability of MOE by producing liquid metal and oxygen gas in a laboratory-scale cell. Promising results for a new proprietary low-cost, oxygen-evolving anode have been obtained. Next steps on the project involve testing/validation for scale-up.

ELECTRODE SYNTHESIS

The challenge for MOE is the development of an electrode material that sustains oxygen production while operating at elevated temperatures (in the vicinity of 1600°C) immersed in a highly aggressive melt. Recent work at MIT has discovered a suite of new candidate electrode materials. Research continues to determine the composition for optimum performance. ↓



HYDROGEN FLASH SMELTER

This laboratory modified reactor at the University of Utah will be replaced with a larger-scale version in 2011 that will enable longer test runs providing necessary scale-up parameters for the design and construction of an industrial pilot plant.

At the University of Utah, researchers are developing the process known as Ironmaking by Hydrogen Flash Smelting. “Flash Smelting” technology is adapted from mining processes and includes advances in furnace technology utilizing hydrogen. As is the case with MOE, when carbon is not used as a fuel in the process, no CO₂ is produced.

A benefit of the process is the productive use of large quantities of very fine iron oxide concentrates produced in the U.S. that are well suited to the suspension reduction process. In addition, natural gas and coal are potential alternative fuels. This technology has the potential of significantly reducing environmental emissions even with a combination of these fuels.

AISI members are also developing the Paired Straight Hearth Furnace, a high-productivity, low-energy ironmaking unit that can process steel plant wastes, as well as virgin iron materials. Using coal instead of coke, this process will be available for commercial demonstration in less than five years.

These near-term and longer-term research and development projects could fundamentally change the way steel is produced and make clear steel’s commitment to a sustainable future.

THE AMERICAN IRON AND STEEL INSTITUTE (AISI)

Founded in 1855 as the American Iron Association, today's American Iron and Steel Institute history spans more than 150 years. The Institute speaks out on behalf of the domestic steel industry on a wide array of issues. Never has it been more critical than it is today for the American steel industry to speak out loud and clear and with a unified voice on major policy issues that are impacting American manufacturers.

The American Iron and Steel Institute's mission is to influence public policy, educate and shape public opinion in support of a strong, sustainable U.S. and North American steel industry committed to manufacturing products that meet society's needs.

To achieve its mission, AISI:

- ◆ Focuses on the advocacy of public policy issues central to the steel industry, issues where AISI can make an impact and issues where there is strong member alignment.
- ◆ Informs and educates opinion leaders about the North American steel industry's strategic importance to national and economic security.
- ◆ Communicates the benefits that the industry's technological advances are making to the health and safety of its workforce and to the environment.
- ◆ Collects and provides industry data to policymakers, company personnel and the public regarding steel operations, production, energy efficiency, shipments, import/export levels and consumption.
- ◆ Pursues technology advancements through Collaborative Research and Development.
- ◆ Assists member companies in attracting and retaining talent.
- ◆ Advances the competitive use of steel in traditional and growth markets.

THE STEEL MARKET DEVELOPMENT INSTITUTE (SMDI)

The Steel Market Development Institute (SMDI), a business unit of AISI, grows and maintains the use of steel through strategies that promote cost-effective solutions in the automotive, construction and container markets, as well as for new-growth opportunities in emerging steel markets. The Steel Market Development Institute investor companies are: AK Steel Corporation, ArcelorMittal Dofasco, ArcelorMittal USA, Nucor Corporation, SSAB Americas, United States Steel Corporation and USS-POSCO Industries.

In partnership with these investor steel companies, the Steel Market Development Institute:

- ◆ Works with automotive engineers to develop and promote lightweight future vehicle designs and the next generation of steel technologies,
- ◆ Conducts research, technology transfer and marketing, and provides sustainable steel-based solutions to challenges faced in the commercial and residential construction sectors, transportation and infrastructure sectors, and energy sectors through its Construction Market program. This includes the development and maintenance of building codes and standards,
- ◆ Interfaces with legislators at the federal and state levels to inform them about the importance of including nutritional canned food in national programs for schoolchildren, and
- ◆ Strategizes with all stakeholders—from customers to political leaders—in all markets to determine how to provide steel-based solutions to their critical marketplace challenges.

THE STEEL RECYCLING INSTITUTE (SRI)

The Steel Recycling Institute, a business unit of AISI, promotes the sustainable benefits of steel the material and sustains the recycling of all steel products. The SRI develops educational materials about the sustainable benefits of steel and the importance of taking care of the planet to schoolchildren and their instructors. The SRI also educates the solid waste industry, government, business and ultimately the consumer about the benefits of steel's infinite recycling cycle.

AISI PRODUCER MEMBERS AND THEIR LOCATIONS

A.FINKL & SONS CO.

North American Locations

Headquarters: Chicago, IL

U.S.

California

Southgate

Michigan

Warren

Minnesota

Minneapolis

Ohio

Tallmadge

CANADA

Quebec

St.Joseph-de-Sorel

MEXICO

Morelos

San Nicolás Tlalnepantla

North American Production: Processes over 100,000 tons

AK STEEL CORPORATION

North American Locations

Headquarters: West Chester, Ohio

U.S.

INDIANA

Columbus: Tubular steel

Rockport: Continuous carbon/stainless pickling line, continuous carbon/stainless cold mill, stainless continuous annealing/pickling line, hydrogen annealing, temper mill, off-line coil inspection and continuous hot-dip galvanizing/galvannealing line

KENTUCKY

Ashland: Galvanized strip, galvanized strip

OHIO

Coshocton: Stainless steels in cold rolled strip, sheet coils

Mansfield: Flat rolled carbon, silicon, ferritic stainless

Middletown: Enameling iron, electro galvanized, hot dip galvanized, hot-dip aluminized, hot-dip aluminized stainless

Walbridge: Tubular steel

Zanesville: Oriented and non-oriented, electrical steel, stainless flat rolled

PENNSYLVANIA

Butler: Hot rolled, cold rolled, stainless, oriented and non-oriented electrical flat-rolled

North American Production: 6.0 million tons

ALTOS HORNOS DE MÉXICO, S.A.B. DE C.V.

North American Locations

Headquarters: Av. Juarez S/No., Col. La Loma, Monclova, Coahuila, México

MEXICO

Coahuila

Monclova facility: Plate; hot rolled coil, cold rolled coil, tin, tin free steel, structural shapes, service center

Distrito Federal

Mexico City: Sales office

Estado de Mexico

Atizapán de Zaragoza: Service center

Jalisco

Zapopan: Service center and sales office

Nuevo Leon

Monterrey: Nacional de Aceros, S.A. de C.V. (NASA): Light weight wall tubes, sales office

San Luis Potosí

San Luis Potosí: Sales office

U.S.

TEXAS

San Antonio: Sales office

North American Production: 4.1 million tons

ARCELORMITTAL DOFASCO

Headquarters: Hamilton, Ontario, Canada

ONTARIO

Hamilton: Flat

Windsor: Flat

ARCELORMITTAL MEXICO

Headquarters: Las Palmas, Mexico, DF

Guanajuato

Celaya Rolling Mill: Long

Michoacan

Lazaro Cardenas: Flat and long

ARCELORMITTAL USA

Headquarters: Chicago, Illinois

U.S.

Illinois

Riverdale: Flat

Indiana

Burns Harbor: Flat and plate

East Chicago: Flat, long, and global research and development center

New Carlisle: I/N Tek and I/N Kote (joint venture with Nippon Steel): Flat

Kentucky

Ghent (Gallatin): Flat (joint venture with Gerdau Ameristeel)

Louisiana

LaPlace: Long

Minnesota

Virginia: Minorca Mine

Hibbing Taconite: Mine (joint venture with U.S. Steel and Cliffs Natural Resources)

North Carolina

Piedmont (Newton): Plate

Ohio

Cleveland: Flat

Columbus: Flat

Marion: Tube

Shelby: Tube

Warren: Coke

Pennsylvania

Coatesville: Plate

Conshohocken: Plate

Monessen: Coke (idled)

Steelton: Long

South Carolina

Georgetown: Long

Texas

Vinton: Long

West Virginia

Princeton: Mine

Weirton: Flat

North American Shipments: 19.5 million tons

BERG STEEL PIPE CORP

North American Locations

Headquarters: Panama City, FL

Product: Steel pipe 24 through 64-in. OD; wall thickness 0.250 through 1.5 in.

U.S.

Alabama

Mobile: Spiral pipe

Texas

Houston: Sales office

North American Production: 550,000 tons

CALIFORNIA STEEL INDUSTRIES

North American Locations

Headquarters: Fontana, CA

U.S.

California

Fontana: Converts purchased steel slab into hot rolled, pickled and oiled, galvanized, and cold rolled sheet; electrical resistance welded pipe

North American Production: 1.5 million tons

CLIFFS NATURAL RESOURCES

North American Locations

Headquarters: Cleveland, Ohio

U.S.

North American Iron Ore

Michigan

Ishpeming: Tilden Mine

Palmer: Empire Mine

Minnesota

Babbitt: Northshore Mining Company (mine)

Eveleth: United Taconite (mine)

Forbes: United Taconite (processing facility)

Hibbing: Hibbing Taconite

Silver Bay: Northshore Mining Company (processing facility)

North American Coal

Alabama

Adger: Oak Grove Mine

West Virginia

Man: Cliffs Logan County Coal

Pineville: Pinnacle Complex

CANADA

Newfoundland and Labrador

Wabush: Wabush Mines (mine)

Quebec

Point Noire: Wabush Mines (processing facility)

Other Cliffs Ventures

Cliffs Ferroalloys: Cliffs owns three chromite deposits within the James Bay Lowlands area of northern Ontario where several major mineral discoveries have been made in recent years. Chromite ore is converted to ferrochrome, a critical ingredient in the production of stainless steel, as well as other steels and nonferrous alloys.

renewaFUEL, LLC: renewaFUEL is a provider of renewable energy for industrial and institutional applications located in Marquette County, MI. The company aggregates, engineers, and distributes coal-sized renewable energy cubes.

North American Iron Ore: 27 million tons

North American Coal: 3.6 million tons

COMPANIA SIDERURGICA HUACHIPATO

Headquarters: Chile

CHILE

Concepcion (Bio-Bio Region)

Talcahuano: Coke production, steelmaking, reinforcing round, wire rod, grinding bars, hot rolled, cold rolled and galvalume

DEACERO, S.A. DE C.V.

North American Locations

Headquarters: San Pedro Garza Garcia, Nuevo Leon–Mexico

MEXICO

Baja California

Mexicali: Wire products

Tijuana: Distribution Center

Coahuila

Ramos Arizpe/Saltito: Steelmaking, billet, wire rod, rebar, wire products

Distrito Federal

Delegacion Gustavo A. Madero: Scrap recollection center

Estado de Mexico

Tlalneplanta: Wire products, scrap recollection center, sales office

Tultitlan: Scrap recollection center, distribution center

Guanajuato

Leon: Wire products

Irapuato: Distribution center

Villagran/Celaya: Steelmaking, billet, wire rod, rebar, wire products

Jalisco

El Salto: Sales office

Guadalajara: Scrap recollection center, distribution center

Michoacan

Morelia: Wire products

Nuevo Leon

Apodaca: Distribution center

Guadalupe: Wire products, scrap recollection center

Santa Catarina: Wire products

San Nicolas de los Garza: Scrap recollection center

San Pedro Garza Garcia: Sales office

Puebla

Puebla: Wire products, scrap recollection center, sales office, distribution center

Queretaro

Queretaro: Wire products

San Luis Potosi

San Luis Potosi: Distribution center

Sinaloa

Culiacan: Distribution center

Sonora

Hermosillo: Scrap recollection center

Tabasco

Villa Hermosa: Distribution center

Tamaulipas

Matamoros: Scrap recollection center

Veracruz

Veracruz: Distribution center

U.S.**Indiana**

Indianapolis: Distribution center

Texas

Houston: Deacero USA, Inc. (wire products and sales office)

Laredo: Distribution center

New Braunfels: Stay Tuff Fence Manufacturing, Inc. (wire products)

North American Production: 2.7 million tons

DTE ENERGY SERVICES**North American Locations**

Headquarters: Ann Arbor, Michigan

U.S.**Maryland**

Baltimore

Indiana

Burns Harbor

Michigan

River Rouge

Pennsylvania

Pittsburgh

North American Production: Among the many energy operations of DTE are metallurgical coke and coal operations for integrated steel mills.

EVRAZ INC. NA

North American Locations

Headquarters: Portland, Oregon

U.S.

Colorado

Pueblo: Rails, billets and special sections, wire rods, coiled rebar, bar, seamless pipe

Delaware

Claymont: Cast slabs, plate, custom burned plate

Oregon

Portland: Plate and coil, heat treating, large diameter line pipe, structural tubing

CANADA

Saskatchewan

Regina: Plate and coil, cut-to-length sheet and plate, large diameter line pipe, medium diameter ERW pipe, small diameter OCTG & line pipe, research and development

Alberta

Calgary: Small diameter OCTG, heat treating

Camrose: Large diameter line pipe, medium and small diameter ERW pipe

Red Deer: Small diameter OCTG & line pipe, HSS

British Columbia

Surrey: Cut-to-length sheet & plate, coils

North American Production: 2.5 million tons

GERDAU AMERISTEEL

North American Locations

Headquarters: Tampa, FL

U.S.

Alabama

Birmingham: Rebar fabrication

Trussville: Rebar fabrication

Arkansas

Gerdau MACSTEEL Fort Smith Steel Mill: Engineered special quality carbon, alloy and bearing steel bars (hot and cold finish)

Little Rock: Rebar fabrication

Paragould: Rail spikes, rebar fabrication

California

Rancho Cucamonga Steel Mill: Rebar

Florida

Fort Lauderdale: Rebar fabrication

Baldwin, Jacksonville Steel Mill: Billets, rebar, rebar coil, wire rod

Jacksonville: Rebar fabrication

Orlando: Rebar fabrication

Tampa: Rebar fabrication

Georgia

Albany: Rebar fabrication

Atlanta: Rebar fabrication

Cartersville Steel Mill: Billets, angles, unequal angles, flats, channels, MC channels, WF beams, S beams

Cartersville: Rebar fabrication

Savannah: Rebar fabrication

Illinois

Belvidere: Rebar fabrication

Decatur: Rebar fabrication

Joliet Rolling Mill: Flats, squares

Sterling: Rebar fabrication

Urbana: Rebar fabrication

Indiana

Huntington: MACSTEEL heat treating

Muncie: Rebar fabrication

North Vernon: MACSTEEL Atmosphere Annealing Inc.

Iowa

Eldridge: Rebar fabrication

Wilton Steel Mill: Billets, squares, angles, unequal angles, flats, rebar

Kentucky

Calvert City Rolling Mill: Angles, unequal angles, flats, channels, MC channels

Louisville: Rebar fabrication

Louisiana

New Orleans Express Shop: Rebar fabrication

Michigan

Gerdau MACSTEEL Jackson Steel Mill: Rebar fabrication, engineered special quality carbon, alloy and bearing steel bars (hot and cold finish)

Gerdau MACSTEEL Monroe Steel Mill: Engineered special quality carbon, alloy and bearing steel bars (hot and cold finish)

Lansing: MACSTEEL Atmosphere Annealing Inc.

Minnesota

Duluth: Grinding balls

St. Paul Steel Mill: Billets, carbon and alloy rounds, rebar

Missouri

Independence: Rebar fabrication

Kansas City: Rebar fabrication

St. Louis: Rebar fabrication

New Jersey

Perth Amboy: Rebar fabrication

Sayreville Steel Mill: Rebar, rebar fabrication

North Carolina

Charlotte Steel Mill: Billets, rounds, angles, unequal angles, flats, channels, rebar, rebar fabrication

Raleigh: Rebar fabrication

Ohio

Canton: MACSTEEL Atmosphere Annealing Inc.

Cincinnati: Rebar fabrication

Orrville: Bright bar, cold drawn steel

Oklahoma

Muskogee: Rebar fabrication

Oklahoma City: Rebar fabrication

Sand Springs: Rail Spikes, rebar, rounds, flats, studded "T" fence post

Pennsylvania

York: Rebar fabrication

South Carolina

Lancaster: Rail spikes

Tennessee

Jackson Steel Mill: Billets, squares, angles, unequal angles, flats, channels, rebar

Johnson City: Rebar fabrication

Knoxville Steel Mill: Billets, rebar, rebar fabrication, plain round

Memphis: Rebar fabrication

Nashville: Rebar fabrication

Texas

Beaumont Steel Mill: Billets, rebar coil, wire rod

Carrollton: Wire rod

Dallas: Rebar fabrication

Houston: Rebar fabrication

Midlothian Steel Mill: Billets, Bantam® beams, S beams, WF beams, rebar, rounds, squares, channels, H piling, sheet piling

Virginia

Fredericksburg: Rebar fabrication

Petersburg Steel Mill: WF beams, H piling, sheet piling

Wisconsin

Appleton: Rebar fabrication

Madison: Rebar fabrication

Pleasant Prairie: MACSTEEL Nitro Steel

CANADA**Ontario**

Cambridge: Rebar, rounds, flats, angles, channels, squares, billets

Oshawa: Raw materials recycling

Whitby: Angles, Rebar, flats, channels beams, billets

Manitoba

Selkirk: Special sections, SBQ, merchant, rebar, light and medium structural angles, channels

North American Production: 12.1 million tons

HARSCO METALS & MINERALS

Headquarters: Harsco Metals and Minerals, Camp Hill, PA
 Harsco Metals America, Seven Hills, PA
 Harsco Minerals International, Mechanicsburg, PA

U.S.

Alabama Natrona Heights
 Birmingham Sarver
 Gadsden Steelton

Arkansas West Mifflin

Utah
 Blytheville
 Hickman Provo

Colorado **Texas**
 Pueblo Midlothian

Indiana **CANADA**
 Gary **Ontario**
 East Chicago Cambridge
 Pittsboro Hamilton
 Whiting Nanticoke
 Whitby

Iowa **Quebec**
 Muscatine Contrecoeur

Kentucky Sorel
 Ashland

Ghent **MEXICO**
Durango
 Detroit Lazaro Cardenas

Ecorse **Guanajuato**
North Carolina Celaya

Cofield **Coahuila**
Ohio Saltillo

Warren **Chiapas**
Pennsylvania Escuintla

Braddock **Tlaxcala**
Butler Apizaco
Latrobe **Nuevo Leon**
Koppel Apodaca
Midland Monterrey

Puebla

Puebla

North American Production: Harsco provides \$1 billion in on-site, outsourced services to steel mills and other metal producers. This includes slag processing, semi-finished inventory management, material handling, scrap management and in-plant transportation.

IVACO ROLLING MILLS 2004 L.P.

North American Locations

Headquarters: Champlain Township, Ontario, Canada

U.S.

New York

Tonawanda: Steel strip, iron strip, coated steel products

CANADA

Ontario

Champlain Township: Hot rolled steel wire rod, billet

North American Production: 300,000 tons

NUCOR CORPORATION

North American Locations

Headquarters: Charlotte, NC

U.S.

Alabama

American Buildings Company Alabama, Eufaula: Metal Buildings Systems

Nucor Steel Birmingham, Birmingham: Carbon steel reinforcing bar, rounds, squares

Nucor Steel Decatur, Trinity: Carbon steel sheet in hot rolled, pickled, cold rolled, galvanized, galvanized

Nucor Steel Tuscaloosa, Tuscaloosa: Carbon and high strength alloy, hot rolled coil and cut-to-length plate for structural and pressure vessel applications

Vulcraft Alabama, Fort Payne: Carbon steel in joists, joist girders, composite floor joist, and floor and roof deck

Arkansas

Nucor Steel Arkansas, Blytheville: Carbon steel sheet in hot rolled, cold rolled, pickled, floor plate, galvanized coils
Nucor-Yamato Steel Company, Armored: Carbon steel wide-flange beams, sheet and H-piling, miscellaneous and standard channels, angles, CZ and CSC car building sections, rail ties

Arizona

Harris Steel–Harris Rebar, Phoenix: Rebar
Harris Steel–Harris Rebar, Phoenix: Rebar
Harris Steel–Harris Rebar, Tuscon: Rebar
Nucor Steel Kingman, Kingman: Carbon steel reinforcing bar, wire rod
Verco Decking, Phoenix: Steel floor, roof deck

California

CBC Steel Buildings, Lathrop: Metal building systems
Harris Steel–Harris Rebar, Diamond Bar: Rebar
Harris Steel–Harris Rebar, Fresno: Rebar
Harris Steel–Harris Rebar, Livermore: Rebar
Harris Steel–Harris Rebar, Pomona: Rebar
Nucor Trading USA, Los Angeles: Steel trading services
Verco Decking, Antioch: Steel floor, roof deck
Verco Decking, Fontana: Steel floor, roof deck

Colorado

Harris Steel–Harris Rebar, Commerce City: Rebar

Connecticut

Harris Steel–Barker Street, South Windsor: Fabricating shop, decorative concrete, building products, rebar sales
Nucor Steel Connecticut, Wallingford: Carbon steel reinforcing bar, wire rod, wire mesh fabrication, structural mesh fabrication, rolled wire, deformed wire

Florida

Harris Steel–Nufab Rebar, Milton: Rebar
Harris Steel–Nufab Rebar, Zellwood: Rebar

Hawaii

Harris Steel–Nufab Rebar, Kapolei: Rebar

Idaho

Harris Steel–Nufab Rebar, Meridian: Rebar

Illinois

American Buildings Company Illinois, El Paso: Metal building systems
Harris Steel–Nufab Rebar, Belvidere: Rebar
Harris Steel–Ambassador Steel Fabrication, Bourbonnais: Rebar
Harris Steel–Ambassador Steel Fabrication, Rochelle: Rebar
Nucor Steel Kankakee, Bourbonnais: Carbon steel angles, rounds, flats, reinforcing bar

Indiana

Harris Steel–Ambassador Steel Fabrication, Auburn: Corporate Offices
Harris Steel–Ambassador Steel Fabrication, Mooresville: Rebar
Nucor Building Systems Indiana, Waterloo: Metal building systems
Nucor Fastener Indiana, St. Joe: Carbon and alloy steel standard hex head cap screws, hex flange bolts, structural bolts and nuts, finished hex nuts
Nucor Steel Indiana, Crawfordsville: Carbon steel sheet in hot rolled, cold rolled, pickled, floor plate and galvanized coils; stainless steel in hot rolled, cold rolled, pickled coils
Vulcraft Indiana, St. Joe: Carbon steel in joist, joist girders, composite floor joist, and floor and roof deck

Iowa

Harris Steel–Ambassador Fabrication, Newton: Rebar

Kentucky

Harris Steel–Fisher and Ludlow, Florence: Bar and safety grating, expanded metals products

Louisiana

Harris Steel–Nufab Rebar, Alexandria: Rebar
Harris Steel–Nufab Rebar, Slidell: Rebar

Maine

Harris Steel–Barker Steel, Scarborough: Rebar, building product sales

Massachusetts

Harris Steel–Barker Steel, Canton: Fabricating shop; building products, forming sales

Harris Steel–Barker Steel, South Deerfield: Fabricating shop, rebar sales

Harris Steel–Barker Steel, Milford: Rebar, forming sales

Harris Steel–Barker Steel, Rochester: Fabricating shop, rebar sales

Harris Steel–Barker Steel, Westfield: Fabricating shop

Michigan

Harris Steel–Ambassador Steel Fabrication, Comstock Park: Rebar

Harris Steel–Ambassador Steel Fabrication, Lansing: Rebar

Harris Steel–Ambassador Construction Prod., Southfield: Rebar

Harris Steel–Ambassador Construction Prod., Traverse City: Rebar

Harris Steel–Ambassador Construction Prod., Wyoming: Rebar

Minnesota

Harris Steel–Ambassador Steel Fabrication, Minneapolis: Rebar

Mississippi

Gulf States Manufacturing, Starkville: Metal Buildings Systems

Nucor Steel Jackson, Jackson: Carbon steel angles, flats, reinforcing rounds, squares

Missouri

Harris Steel–Ambassador Steel Fabrication, Kansas City: Rebar

Harris Steel–Nufab; Ambassador Steel Fab., St. Louis: Rebar

Nebraska

Nucor Cold Finish Nebraska, Norfolk: Carbon, leaded and alloy cold drawn steel bar

Nucor Steel Nebraska, Norfolk: Carbon and alloy steel in special bar quality, cold heating quality and bearing quality, merchant bar quality in angles, channels, flats, hexagons, rounds and squares, rod, bar, squares, hex in coil

Vulcraft Nebraska, Norfolk: Carbon steel in joists, joist girders, composite floor joists, and floor and roof deck

Nevada

American Buildings Company Nevada, Carson City: Metal Building Systems

Harris Steel–Harris Rebar, Moundhouse: Rebar

New Hampshire

Harris Steel–Barker Street, Canaan: Fabricating shop, structural steel, rebar and building product sales

New Jersey

Harris Steel–Barker Street, Avenel: Fabricating shop; rebar, building product sales

New Mexico

Harris Steel–Harris Rebar, Albuquerque: Rebar

New York

Harris Steel–Barker Steel, Albany: Fabricating shop, rebar, product sales

Harris Steel–Barker Steel, Long Island City: Building product sales

Nucor Steel Auburn, Auburn: Carbon steel angles, channels, flats, reinforcing bars, rounds, squares

Vulcraft New York, Chemung: Carbon steel in joists, joist girders, composite floor joists, special profile steel trusses, and floor and roof deck

North Carolina

Nucor Corporation, Charlotte: Corporate Office

Nucor Steel Hertford County, Cofield: Carbon steel plate

Ohio

Harris Steel–Ambassador Steel Fabrication, Marlon: Rebar

Nucor Steel Marion, Marion: Carbon steel angles, flats, rebar, rounds, signposts

Oregon

Harris Steel–Harris Rebar, Portland: Rebar

Pennsylvania

Harris Steel–Harris Rebar, Bethlehem: Rebar

Harris Steel–Fisher and Ludlow, Wexford: Bar, safety grating; expanded metals products

Nucor Wire Products Pennsylvania, New Salem: Standard and custom wire products including wire rack decking, light weight galvanized mesh, mine mesh, engineering mesh

Rhode Island

Harris Steel–Barker Steel, Pawtucket: Fabricating shop; rebar, building products and forming sales

South Carolina

Nucor Building Systems South Carolina, Swansea: Metal Building Systems

Nucor South Carolina, Darlington: Carbon leaded and alloy cold drawn steel bars, carbon steel in special bar quality; merchant bar quality; and reinforcing products in the following shapes: angles, channels, flats, hexagons, reinforcing bars, rounds

Nucor Steel Berkeley, Huger: Carbon steel sheet in hot rolled, cold rolled, pickled, galvanized, and galvanized coils, carbon steel wide range beams, manufacturing housing beams, standard I beams, miscellaneous and standard channels

Vulcraft South Carolina, Florence: Carbon steel in joists, joist girders, composite floor joists, and floor and roof deck

Tennessee

Harris Steel–Nufab Rebar, Collierville: Rebar

Nucor Steel Memphis, Memphis: Carbon steel in special bar quality rounds, round cornered squares

Kirby Building Systems, Portland: Metal Building Systems

Texas

Harris Steel–Nufab Rebar, Dayton: Rebar

Harris Steel–Nufab Rebar, Longview: Rebar

Nucor Building Systems, Terrell: Metal Building Systems

Nucor Steel, Denton: Light gauge steel panels, trusses

Nucor Steel Texas, Jewett: Carbon steel angles, channels, flats, reinforcing bars, rounds, special sections, squares, U.M. plates

Vulcraft Texas, Grapeland: Carbon steel in joists, joist girders, composite floor joists, special profile steel trusses, and floor and roof deck

Utah

Harris Steel–Harris Rebar, Salt Lake City: Rebar

Nucor Building Systems, Brigham City: Metal Building Systems

Nucor Cold Finish Utah, Brigham City: Cold finished SBQ bar products, cold rolled wire, welded wire mesh

Nucor Steel Utah, Plymouth: Carbon steel angles, channels, flats, reinforcing bars, rounds, squares

Nucor Wire Products Utah, Brigham City: Carbon steel standard mesh, mine mesh, rolled wire

Vulcraft Utah, Brigham City: Carbon steel in joists, joist girders, composite floor joists, special profile steel trusses

Virginia

American Buildings Company Virginia, LaCrosse: Metals Building System

Washington

Harris Steel–Harris Rebar, Auburn: Rebar

Harris Steel–Harris Rebar, Lake Stevens: Rebar

Harris Steel–Harris Rebar, Port of Tacoma: Rebar

Nucor Steel Seattle, Seattle: Carbon steel angles, channels, flats, reinforcing bar, rounds, squares

Wisconsin

Harris Steel–Ambassador Steel Fabrication, Menominee: Rebar

Harris Steel–Ambassador Steel Fabrication, Waukesha: Rebar

Nucor Cold Finish Wisconsin, Oak Creek: Carbon, leaded, alloy cold drawn steel bars

North American Production: 20.0 million tons

David J. Joseph, Co. (a Nucor Subsidiary)

David J. Joseph, Co. is a scrap subsidiary of Nucor Corporation and has numerous locations in the following states: Alabama, Colorado, Florida, Illinois, Indiana, Kansas, Kentucky, Missouri, Nebraska, Nevada, New Mexico, North Carolina, Ohio, Pennsylvania, South Carolina, Texas, Utah

Harris Steel Group (a Nucor Subsidiary)

CANADA

Alberta

Harris Rebar, Calgary: Rebar
 Fisher and Ludlow, Edmonton: Bar and safety grating, expanded metals products
 Harris Rebar, Fort McMurray: Rebar
 Harris Rebar, Fort Saskatchewan: Rebar
 Harris Rebar, Leduc: Rebar

British Columbia

Harris Rebar, Abbotsford: Rebar
 Harris Rebar, Kelowna: Rebar
 Harris Rebar, Nanaimo: Rebar
 Fisher and Ludlow, Surrey: Bar and safety grating; expanded metals products
 Harris Rebar, Delta Vancouver: Rebar

New Brunswick

Harris Rebar, St. John: Rebar

New Foundland

Harris Rebar, Mount Pearl: Rebar

Nova Scotia

Harris Rebar, Dartmouth: Rebar

Ontario

Harris Steel Group, Stoney Creek: Corporate Headquarters
 Harris Rebar, Ontario, Brampton: Rebar
 Fisher and Ludlow, Burlington: Bar and safety grating; expanded metal products
 Harris Rebar, Hamilton: Rebar
 Harris Rebar, London: Rebar
 Harris Rebar, Mississauga: Rebar

Harris Rebar, Ottawa: Rebar
 Harris Rebar, Sarnia: Rebar
 Harris Rebar, Scarborough: Rebar
 Harris Rebar, Sudbury: Rebar
 Harris Rebar, Thunder Bay: Rebar
 Harris Rebar, Maidstone, Windsor: Rebar

Quebec

Harris Rebar, Longueuil, Montreal: Rebar
 Fisher and Ludlow, Point Aux Trembles: Bar and safety grating; expanded metals products

Saskatchewan

Harris Rebar, Regina: Rebar
 Harris Rebar, Saskatoon: Rebar

SEVERSTAL NORTH AMERICA, INC.

North American Locations

Headquarters: Dearborn, MI

U.S.

Maryland

Sparrows Point: Hot and cold rolled, hot dipped sheet, slabs, galvalume, tin mill products

Michigan

Dearborn: Slabs, hot and cold rolled sheet, electrogalvanized sheet, hot-dip galvanized sheet

Mississippi

Columbus: Hot rolled, cold rolled and galvanize/galvanneal coated products, including high-quality surface steels for exposed automotive applications

Ohio

Warren: Hot and cold rolled sheet, slabs and hot-dip galvanized sheet
 Yorkville: Cold rolled sheet

West Virginia

Wheeling: Hot rolled, hot-dip galvanized, electrogalvanized, black plate

North American Production: 7.5 million tons

SSAB

North American Locations

Headquarters: Lisle, IL

U.S.

Alabama

Mobile: Plate, coil

Iowa

Montpelier: Plate, slit coil, coil

Minnesota

Roseville: Cut-to length sheet, plate

Texas

Houston: Cut-to length sheet, plate

CANADA

Ontario

Scarborough: Temper leveled cut-to-length sheet, plate

North American Production: 2.0 million tons

TENARIS TAMSA

Headquarters: Mexico City, Mexico

U.S.

Arkansas

Blytheville: Maverick Tube Corporation (welded steel tubes)

California

Bakersfield: Hydril Company (threading facility)

Louisiana

Westwego: Hydril Company (threading facility)

Texas

Conroe: Maverick Tube Corporation (welded steel tubes)

McCarty/Houston: Hydril Company (threading facility)

Downhole Center/Houston: Tenaris Coiled Tubes, LLC
(coiled tubes facility)

Subsea Center/Houston: Tenaris Coiled Tubes, LLC
(coiled tubes facility)

Houston: Texas Arai (couplings facility)

CANADA

Ontario

Saulte Ste.: Algomatubes Inc. (seamless steel tubes)

Alberta

Calgary: Prudential Steel Ltd. (welded steel tubes)

Nisku: Hydril Canadian Company Ltd (threading facility)

MEXICO

Tenaris Tamsa

Veracruz: Seamless steel tubes, R&D Center, threading facility

Tabasco

Comalcalco: Threading facilities

North American Production: 1.7 million tons

TERNIUM

North American Locations

Headquarters: Monterrey, Mexico

MEXICO

Coahuila

Monclova: Galvanized and color coated sheets

Nuevo Leon

Monterrey: HRC, CRC

Apodaca: Billets, rebars

San Nicolas: HRC, CRC, profiles and tubes, panels,
galvanized and color coated coils

Puebla

Puebla: Rebar, wire rod

U.S.

Louisiana

Shreveport: Galvanized, color coated sheets

North American Production: 5.6 million tons

THE TIMKEN COMPANY

North American Locations

Headquarters: Canton, OH

U.S.

Arizona

Mesa: Timken Aerospace Aftermarket Solutions (products and services)

Mesa: Technology Engineering Center

Mesa: Sales office

California

Los Alamitos: Timken Bearing Inspection Inc. (aerospace)

Los Alamitos: Sales office

Connecticut

Manchester: Timken Aerospace Transmissions, LLC (gear-boxes & transmissions for military & commercial aircraft)

Manchester: Technology Engineering Center (aerospace)

Manchester: Sales office

Georgia

Ball Ground (Canton): Green Ring Plant (small facility)

Indiana

South Bend: South Bend Plant (reconditioning & remanufacturing of antifriction roller bearings)

New Hampshire

Keene: Technology center

Keene: Timken Super Precision (health & positioning control bearing products)

Lebanon: Timken Aerospace (precision bearings for aerospace)

Lebanon: Technology center

North Carolina

Columbus (Tyron Peak): Timken STEEL Value added processing

Iron Station (Lincolnton): Bearing Plant (mobile & industrial)

Randleman (Asheboro): Bearing Plant (industrial & aerospace)

Rutherfordton (Shiloh): Bearing Plant (aerospace)

Ohio

Bucyrus: Bearing Plant (mobile & industrial)

Canton: Harrison STEEL (Alloy steel bars)

Canton: Faircrest STEEL (Alloy steel bars, billets)

Canton: Gambrinus Roller Plant (Rollers for roller bearings)

Canton: Gambrinus STEEL (Seamless tubing)

(NOTE: Timken does not produce sheet metal)

Canton: Sales and administrative offices, Timken Bearings & Power Transmission and STEEL

Eaton (St. Clair): STEEL (Specialty steel components for vehicles)

New Philadelphia: Bearing Plant (precision aerospace a industrial)

Niles: Industrial Services Plant (life-extending surface technologies)

North Canton: Technology Engineering Center (global engineering headquarters)

South Carolina

Duncan: Distribution Center

Gaffney: Bearing Plant (mobile & aerospace)

Honea Path: Bearing Plant (mobile)

Union (Tyger River): Bearing Plant (Ultra-large-bore tapered roller bearings for wind turbines and large machinery)

Union (Tyger River): Industrial Service Center

Tennessee

Mascot (Knoxville): Sales office and Rail Bearing Services Facility

Pulaski: Bearing Plant (industrial bearings, housed units & components)

Texas

Houston: Timken Boring Specialties, LLC (STEEL) Value added processes

Virginia

Altavista: Bearing plant

Washington

Ferndale: Bearing plant

North American Production: 1.2 million tons

THYSSENKRUPP STEEL USA, LLC

North American Locations

Headquarters: Calvert, Alabama

U.S.

Alabama

Calvert: Hot rolled, Cold rolled, pickle and oiled, galvanized, galvanized, aluminized, galvalume

Michigan

Detroit: Automotive Sales office

North American Production: 2.5 million tons (est'd for 2011), 4.5 million steady state full production (2013)

UNITED STATES STEEL CORPORATION

North American Locations

Headquarters: Pittsburgh, PA

U.S.

Alabama

Fairfield: Slabs, rounds, sheets; seamless tubular mill

Arkansas

Pine Bluff: Tubular couplings

California

Pittsburg: JV USS-POSCO Industries (sheets and tin mill) and JV United Spiral Pipe, LLC (spiral welded tubular)

Illinois

Granite City: Sheets, slab and coke

Indiana

East Chicago: Tin mill

Gary: Slabs, steel tin mill, sheets, strip mill plate, coke

Portage: Sheets and tin mill

Portage: JV Feralloy Processing Company (steel processing)

Michigan

Canton: JV Worthington Specialty Processing (steel processing)

Dearborn: Coated sheet, JV Double Eagle Steel Coating Company (Galvanized sheets)

Ecorse and River Rouge: slabs and sheets

Ishpeming: Tilden Mining Company (Iron ore pellets)

Jackson: JV Worthington Specialty Processing (steel processing)

Taylor: JV Worthington Specialty Processing (steel processing)

Minnesota Mining Operations

Hibbing: Hibbing Taconite Company (iron ore pellets)

Keewatin: Keetac Iron Ore Operations (iron ore pellets)

Mt. Iron: Minnitac Iron Ore Operations (iron ore pellets)

Mississippi

Jackson: JV Double G Coatings Company, L.P. (Galvanized and galvalume sheets)

Ohio

Leipsic: JV PRO-TEC Coating Company (Galvanized sheets)

Lorain: Seamless tubular

Pennsylvania

Braddock: Slabs

Fairless Hills: Galvanized Sheets

Clairton: Coke

McKeesport: Distribution center

West Mifflin: Sheets

Munhall: Research and Technology Center

Texas

Bellville: Welded tubular

Hughes Springs: Tubular couplings

Houston: Tubular couplings, processing, threading, inspection and storage service and research & development center

Lone Star: Welded tubular

CANADA

Alberta

Calgary: U.S. Steel Tubular Products Canada Sales Office

Ontario

Baycoat (Hamilton): Finishing and joint venture

Beamsville: Chrome Deposit Corporation (Processing, administrative)

Hamilton: Hamilton Works (Steelmaking, finishing, coke production)

Nanticoke: Lake Erie Works (Steelmaking, finishing, coke production)

Stoney Creek: D.C. Chrome Limited (Processing and joint venture)

MEXICO

Coahuila

Ramos Arizpe: Acero Prime (Processing, warehousing and joint venture)

San Luis Potosi

San Luis Potosi: Acero Prime (Processing, warehousing and joint venture)

North American Production: 15.0 million tons

USS-POSCO INDUSTRIES

North American Locations

Headquarters: Pittsburg, CA

California

Pittsburg: Sheet products and tin mill

North American Production: 1.2 million tons

Associate and Affiliate Members

Accenture
Aether DBS
Aker Construction, Inc.
AKJ Industries, Inc.
Almatis, Inc.
American Steamship Company
ASKO, Inc.
ATSI, Inc.
Babst, Calland, Clements & Zomnir, P.C.
Bailey PVS Oxides
Baosteel America Inc.
Barnes & Thornburg
BASF Corporation
Beemsterboer Slag Corporation
Berkeley Research Group, LLC
Berry Metal Company
Bradford Research, Inc.
Bricmont, Inc.
Carmeuse Lime and Stone
Castrip, LLC
Castrol Industrial North America Inc.
Cattron Group International
Charles L. Trozzo
Chrome Deposit Corporation
Consolidated Terminals and Logistics Co.
Core Furnace Systems Corporation
CSX Transportation
Danieli Corporation
The David J. Joseph Company
Deublin Company
Drives LLC
Eckert Seamans Cherin & Mellott
Edw. C. Levy Company
Environmental Quality Management, Inc.
Eramet North America, Inc.
Feralloy Corporation
First River
Fritz Enterprises, Inc.
GrafTech International Ltd.
Hatch
Heffernan International
Heraeus Electro-Nite Company, LLC
Heritage Environmental
Hilti, Inc.
HYDAC International
Hydrochem Industrial Services, Inc.
IAT International, Inc.
IHS Global Insight, Inc.
Independent Equipment Company
INTEG Process Group, Inc.
The Interlake Steamship Company
Itipack Systems Inc.
John Maneely Company
K&L Gates LLP
Kelley Drye & Warren LLP
Kenilworth Steel Company
Kirkpatrick & Lockhart Preston
Gates Ellis LLP
Lapham-Hickey Steel Corporation
Lhoist North America
The Lincoln Electric Company
Longbow Research
Magneco/Metrel, Inc.
Magnesita Refractories Company
Magotteaux, Inc.
Massey Metallurgical Coal, Inc.
MAX Environmental Technologies Inc.
Metal Strategies, Inc.
Morgan, A Siemens VAI Business
Nalco Company
National Material, L.P.
Navigant Consulting, Inc.
New Millenium Building Systems
Nippon Steel USA, Inc.
Norfolk Southern Corporation
North American Refractories Company
Northrop Grumman Corporation
ODERCO Inc.
O'Neal Steel, Inc.
Oracle
Otto Wolf U.S. Sales Corp.
Pacesetter Steel Service, Inc.
Pepper Hamilton LLP
PGT Trucking, Inc.
PLS Logistics Services
POSCO America Corp.
Praxair, Inc.
PricewaterhouseCoopers LLP
Primary Energy Recycling Corporation
Process Metrix LLC
PSC Metals, Inc.
Reference Metals Company
River Hill Coal Company
S & S Intersource LLC
Schneider Electric
Seaway Marine Transport
Sector3 Appraisals, Inc.
SES, LLC
SGL Carbon Corporation, LLC
The Shaw Group, Inc.
Showa Denko Carbon, Inc.
Silgan Containers Corporation
SMS Mill Services, LLC
SMS Siemag LLC
Squire, Sanders & Dempsey LLP
Steel Market Intelligence
Steel Technologies
Steelfast Framing Systems, Inc.
Steelscape, Inc.
SunCoke Energy, Inc.
Telling Industries
TenoVA Goodfellow Inc.
TMEIC-GE
Tube City IMS
U.S. Geological Survey
Uhde Corporation of America
Veolia Water North America
Vesuvius USA Corp.
Xcoal Energy & Resources
Xtek, Inc.

AISI Directors

Joseph A. Carrabba

Chairman, President &
Chief Executive Officer
Cliffs Natural Resources, Inc.

William T. Chisholm

Chief Executive Officer
ArcelorMittal México

Miguel Elizondo

Sales and Marketing Director
Altos Hornos de México, S.A.

Ivan Flores

President
Compañía Siderúrgica Huachipato S.A.

Raul M. Gutierrez

Director General
Deacero, SA de CV

Steve Harker

President
Aker Construction, Inc.

Gene A. Iannazzo

Chief Commercial Officer
Harsco Metals & Minerals

Sergei A. Kuznetsov

President and Chief Executive Officer
Severstal North America, Inc.
and Severstal International

Christoph Lackinger

President and Chief Executive Officer
ThyssenKrupp Steel USA, LLC

Bruce C. Liimatainen

Chairman and Chief Executive Officer
A. Finkl & Sons Co.

Mario Longhi

President and Chief Executive
Officer
Gerdau Ameristeel

Giorgio Piliu

President
Ivaco Rolling Mills 2004 L.P.

Michael T. Rehwinkel

Chief Executive Officer
Evraz Inc. NA

David Ruud

President
DTE Energy Services

Hans J. Sack

President and Chief Executive Officer
Berg Steel Pipe Corporation

Juergen G. Schachler

President and Chief Executive Officer
ArcelorMittal Dofasco

Louis L. Schorsch

President and Chief Executive Officer
ArcelorMittal Americas

Robert R. Smith

President
USS-POSCO Industries

John P. Surma

Chairman and Chief Executive Officer
United States Steel Corporation

Ward J. Timken, Jr.

Chairman
The Timken Company

Guillermo F. Vogel

Vice Chairman of the Board
TenarisTamsa

Vicente B. Wright

President and Chief Executive Officer
California Steel Industries, Inc.



**American
Iron and Steel
Institute**

WASHINGTON DC

1140 Connecticut Avenue NW
Suite 705
Washington DC 20036-4011
202.452.7100

DETROIT

2000 Town Center
Suite 320
Southfield MI 48075-1199
248.945.4777

PITTSBURGH

680 Andersen Drive
Pittsburgh PA 15220-2700
412.922.2772

www.steel.org

The New Steel 