



FOR IMMEDIATE RELEASE
July 27, 2010

CONTACT: NANCY GRAVATT
202.452.7115/ ngravatt@steel.org

Preliminary Steel Imports, Down 14% in June, Increase 35% in First Half of Year;
Import Market Share 21% in Second Quarter 2010

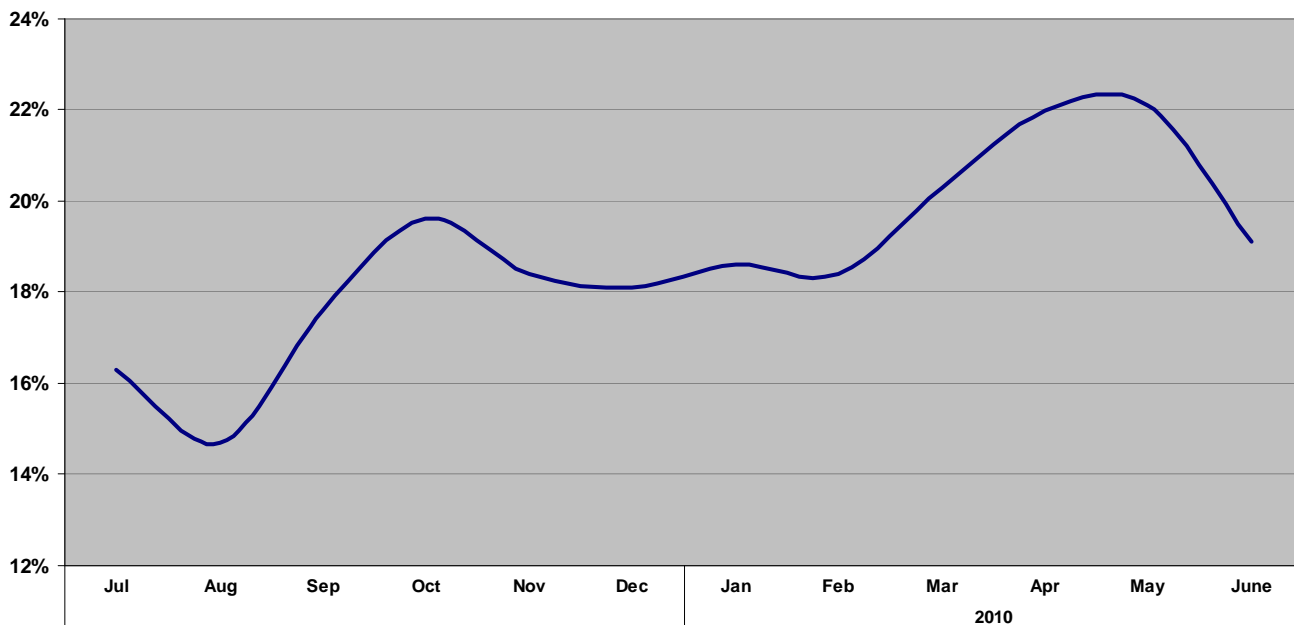
Washington, D.C. – Based on preliminary Census Bureau data, the American Iron and Steel Institute (AISI) reported today that the U.S. imported a total of 1,982,000 net tons (NT) of steel in June, including 1,543,000 NT of finished steel (down 14% each vs. May final data). Annualized total and finished steel imports in 2010 would be 23.3 and 18.3 million NT, respectively, up 44% and 29% vs. 2009. Finished steel import market share was an estimated 19% in June, vs. a low of 15% in August 2009. Import market share was 21% for the 2nd Quarter of 2010 vs. 19% in Q1 2010. In the first 6 months of 2010, total and finished steel imports were up 35% and 14%, respectively, compared to the same period last year.

Key finished steel products with significant import increases in June 2010 compared to May include reinforcing bars (up 131%), sheet and strip all other metallic coatings (up 33%) and standard pipe (up 14%). Key finished steel products with significant import increases in the first 6 months of 2010 vs. the same period of last year include wire rods (up 157%), hot rolled bar (up 53%), sheet & strip all other metallic coated (up 48%), hot rolled sheet (up 45%) and sheet & strip hot-dipped galvanized (up 32%).

Steel Mill Product	June (prelim.)	May final	% var June vs. May	(6 mo) YTD 2010	(6 mo) YTD 2009	% var '10 vs. '09	2010 Annualized	2009 12 mo.	% var 2010 ann. vs 2009 12 mo.
Ingots and Billets and Slabs	435,581	501,909	-13.2%	2,467,863	556,805	343.2%	4,935,727	2,014,511	145.0%
Sheets Hot Rolled	187,796	212,185	-11.5%	1,167,702	807,420	44.6%	2,335,404	1,739,209	34.3%
Oil Country Goods	197,751	239,482	-17.4%	988,483	1,363,462	-27.5%	1,976,965	1,602,111	23.4%
Line Pipe	105,548	136,800	-22.8%	815,791	992,454	-17.8%	1,631,583	1,603,357	1.8%
Sheets & Strip Galv HD	139,339	144,707	-3.7%	758,653	576,677	31.6%	1,517,306	1,033,045	46.9%
Wire Rods	117,134	135,286	-13.4%	717,240	278,761	157.3%	1,434,480	763,391	87.9%
Sheets Cold Rolled	92,126	103,688	-11.2%	571,941	598,469	-4.4%	1,143,882	1,137,583	0.6%
Plates in Coils	57,164	147,240	-61.2%	508,767	364,149	39.7%	1,017,534	710,897	43.1%
Bars - Hot Rolled	79,035	95,572	-17.3%	504,973	329,339	53.3%	1,009,945	674,388	49.8%
Plates Cut Lengths	63,019	58,651	7.4%	372,796	314,492	18.5%	745,592	530,221	40.6%
Standard Pipe	68,796	60,450	13.8%	357,943	346,721	3.2%	715,885	593,409	20.6%
Wire Drawn	57,387	54,014	6.2%	309,235	218,495	41.5%	618,471	486,302	27.2%
Bars - Reinforcing	48,666	21,080	130.9%	258,708	284,306	-9.0%	517,415	419,426	23.4%
Structural Shapes Heavy	42,007	65,341	-35.7%	252,144	228,079	10.6%	504,287	371,418	35.8%
Sheets & Strip All Other Ctd.	54,930	41,325	32.9%	230,995	156,231	47.9%	461,989	298,070	55.0%
Tin Plate	42,688	45,365	-5.9%	220,648	147,125	50.0%	441,297	322,955	36.6%
Mechanical Tubing	34,308	35,645	-3.8%	175,829	204,866	-14.2%	351,658	332,661	5.7%
All Other	158,565	195,119	-18.7%	973,215	856,051	13.7%	1,946,430	1,581,951	23.0%
TOTAL	1,981,840	2,293,859	-13.6%	11,652,926	8,623,902	35.1%	23,305,850	16,214,905	43.7%
SUBTOTAL Finished Imports	1,542,700	1,788,836	-13.8%	9,168,029	8,057,266	13.8%	18,336,059	14,178,577	29.3%

In June, the largest volumes of finished steel imports from offshore were from South Korea (152,000, down 16%), China (78,000 NT, up 28%), Taiwan (77,000, up 245%), Japan (71,000 NT, down 43%) and Turkey (64,000, up 18%). For the first six months of 2010, the largest offshore suppliers were South Korea (889,000, up 15%), Japan (621,000 NT, up 11%) and Germany (450,000 NT, up 52%). Below are charts on estimated steel import market share in recent months and on finished steel imports from offshore by country.

Estimated Finished Steel Import Market Share for the Past 12 months



**U.S. IMPORTS OF FINISHED STEEL MILL PRODUCTS
BY COUNTRY OF ORIGIN
(thousands of net tons)**

COUNTRY	June 2010	May 2010	% incr. June vs May	(6 mo) YTD 2010	(6 mo) YTD 2009	% incr. '10 YTD vs. '09	2010 full year (est.)	2009 Annual	% incr. 2010 an. vs. '09
South Korea	152	181	-15.9%	889	775	14.7%	1,777	1,323	34.4%
Japan	71	125	-42.9%	621	559	11.1%	1,242	981	26.6%
Germany	60	99	-39.1%	450	296	52.3%	901	495	82.1%
China	78	61	27.6%	372	1,197	-68.9%	745	1,463	-49.1%
India	52	117	-55.8%	340	379	-10.3%	679	581	16.9%
Turkey	64	54	17.5%	319	323	-1.3%	638	492	29.9%
Australia	48	52	-7.3%	267	112	138.5%	534	285	87.6%
All Other	1,016	1,099	-7.5%	5,910	4,416	33.8%	11,820	8,560	38.1%
Total	1,543	1,789	-13.8%	9,168	8,057	13.8%	18,336	14,178	29.3%

**U.S. IMPORTS OF FINISHED STEEL MILL PRODUCTS
3 MONTHS ROLLING AVERAGE
(thousands of net tons)**

Product	Preliminary 3 Mos. Rolling Avg. Jun. 10 - Apr. 10	Actual 3 Mos. Prior Mar. 10- Jan. 10	Current 3 Months vs 3 Months Prior % Change
Oil Country Goods	210	119	76.4%
Sheets Hot Rolled	199	190	4.4%
Line Pipe	141	131	7.5%
Sheets & Strip Galv HD	135	118	14.8%
Wire Rods	123	116	5.3%
Plates in Coils	103	66	56.0%
Sheets Cold Rolled	97	93	4.7%
Bars - Hot Rolled	88	80	9.4%
Standard Pipe	65	55	18.9%
Plates Cut Lengths	62	62	0.3%
All Other	446	355	25.7%
Total	1,670	1,386	20.5%

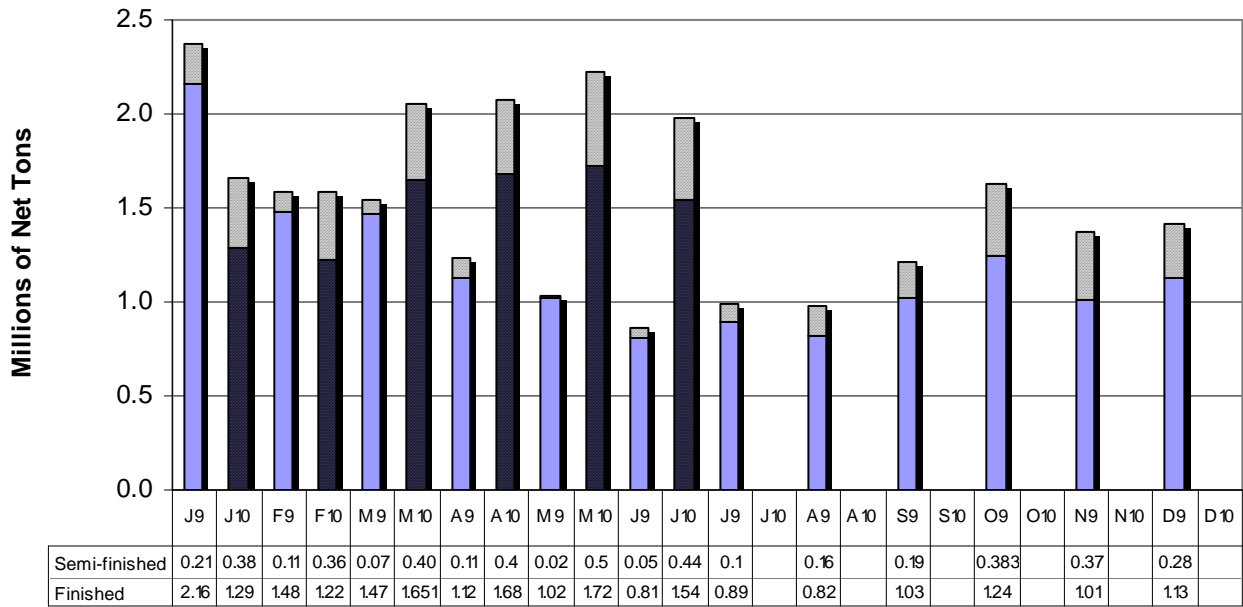
**U.S. IMPORTS OF FINISHED STEEL MILL PRODUCTS
3 MONTHS ROLLING AVERAGE
(thousands of net tons)**

Country	Preliminary 3 Mos. Rolling Avg. Jun. 10 - Apr. 10	Actual 3 Mos. Prior Mar. 10- Jan. 10	Current 3 Months vs 3 Months Prior % Change
South Korea	177	119	48.0%
Japan	96	111	-14.2%
Germany	82	68	19.9%
India	70	43	61.1%
Turkey	68	38	77.6%
China	67	57	17.1%
Taiwan	56	27	106.9%
Italy	45	43	5.9%
Netherlands	45	25	79.0%
Australia	45	44	1.6%
All Other	920	809	13.7%
Total	1,670	1,386	20.5%

Source: U.S. Department of Commerce

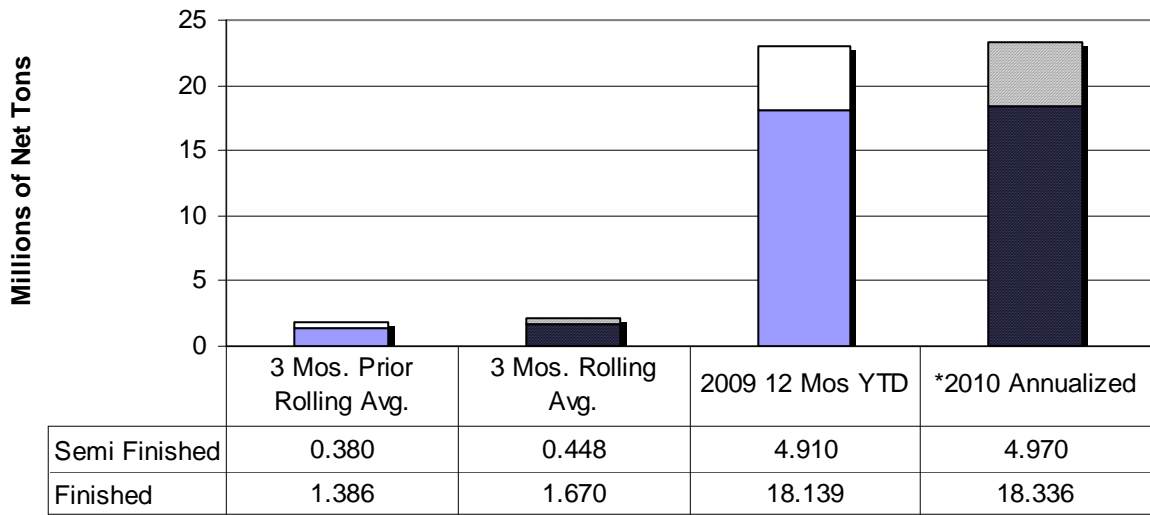
-MORE

Monthly Imports 2009 vs. 2010



% change finished imports June 2010 vs June 2009 = 90.3%

3 Month Rolling Averages and YTD 2010 vs. 2009



% change finished imports 3 Mos. Rolling Avg. vs. 3 Mos. Prior = 20.4%

% change semi-finished imports 2010 vs 2009 = 338.6%

% change finished imports 2010 vs 2009 = 29.3%

*preliminary

AISI serves as the voice of the North American steel industry in the public policy arena and advances the case for steel in the marketplace as the preferred material of choice. AISI also plays a lead role in the development and application of new steels and steelmaking technology. AISI is comprised of 23 member companies, including integrated and electric furnace steelmakers, and 138 associate and affiliate members who are suppliers to or customers of the steel industry. AISI's member companies represent approximately 75 percent of both U.S. and North American steel capacity. For more news about steel and its applications, view AISI's Web site at www.steel.org.

-#####-